



UKLC

Educate · Inspire · Enrich

2025

**Year Round Courses for
Young Learners aged 8-17**

Welcome 'Why UKLC'	03	Year Round Centres	14
UKLC 'Educate, Inspire, Enrich'	04	Chester, Homestay	16
Year Round Programmes	06	Crewe, Cheshire Campus (NEW)	18
Ministay.....	08	Edinburgh, Newbattle Abbey College.....	20
School Intergration.....	09	Portsmouth, University of Portsmouth (NEW)	22
Winter.....	10	Reading, Queen Anne's School.....	24
PCTO.....	12	Winchester, St Swithun's School (NEW).....	26
English for Specific Purposes.....	13	More information	28
		English Lessons.....	30
		Accommodation	32
		Welfare.....	34
		Maps.....	36

“

Watching our students make friends with people from all over the world whilst building connections and developing understanding is the most rewarding part of what we do. In a world that can feel divided, using a common language builds bridges between us all. By being open to new learning experiences, it widens our students' perspective on the world. Language and learning are tools for life!

Céline Aloé, CEO and founder of UKLC



”

Why UKLC?

- ★ **Over 20 years of experience in the ELT market**
- ★ **Well-known junior course provider**
- ★ **Independent, owner-led company built on long running and trusted relationships**
- ★ **Experienced in creating and delivering specialist, short-term junior programmes**
- ★ **Knowledgeable and dedicated head office team with valuable on-site experience**
- ★ **We work exclusively with Educational Tour Operators**



- 2001** ● Céline started MJA Language with 4 centres in the north of England
- 2006** ● Became British Council Accredited
- 2011** ● We became UK Language Courses (UKLC)
- 2012** ● Joined English UK
- 2015** ● Joined ALTO (Association of Language Travel Organisations)
The first ministay programmes started in Chester
- 2016** ● First summer school in London at King's College
- 2018** ● Finalists in the Study Travel Star Awards "ST Junior Course for under 18s"
- 2020** ● During the pandemic we delivered free teacher training courses online and ran boarding camps for boarding school students in the UK. The team cycled 500 miles across the country for the Eddie Buyers Fund and raised £3488 for which we won the Lead 5050 Charitable Endeavor Award
- 2021** ● Finalists in the Study Travel Star Awards "ST Junior Course for under 18s"
- 2022** ● Joined Quality English
- 2023** ● Opened our first centre specially designed for individuals and small groups
We acquired the homestay and immersive language company, Linguastay
- 2024** ● Grew the UKLC group further by forming a strategic alliance with the Irish language school ATC
- 2025** ● 5 new centres added to our collection:
 - ★ Hatfield, Queenswood School
 - ★ Manchester, Chetham's School
 - ★ Portsmouth, University of Portsmouth
 - ★ Winchester, St Swithun's School
 - ★ Crewe, Cheshire Campus

UKLC

UKLC provides residential and homestay English language and activity programmes for students aged 8-17 years. Our aims are simple; to Educate, Inspire and Enrich future generations.

Educate

Our objective is to enable students of all abilities to improve their English in a safe, relaxed and comfortable environment. English lessons are carefully constructed and developed by our academic team.

Inspire

Our friendly and enthusiastic team work hard to ensure that students, group leaders and partners have an unforgettable experience with us. Our directors, management, coordinators, teachers, sports and activity instructors and excursion and activity leaders all aspire to deliver excellence to inspire our students to learn and succeed.

Enrich

Our centres are located in vibrant cities and charming towns that students explore and enjoy during their stay. Students learn about British culture and develop their language skills and increase their confidence as part of the immersive experience.

Photo depicts UKLC Students

Year Round Programmes

At UKLC, we offer customised English language programmes for groups throughout the year. Our courses combine English lessons with activities and excursions, providing a complete learning experience. We have a choice of different programmes available and our experienced and helpful team are on hand to create the perfect programme for your students. We offer both full-board residential accommodation and homestay options across our year-round centres, ensuring we have something for every group.

Highlights

- Tailor-made programmes to meet the requirements of each group
- Homestay and residential accommodation available (centre dependant)
- All centres within 2 hours of a major international airport
- A choice of programmes are available across the centres, including Ministay programmes, Winter programmes, School Integration, PCTO Programmes, English for Specific Purposes Programmes

Edinburgh
Newbattle Abbey College

Chester
University of Chester

Crewe
Cheshire Campus

Portsmouth
University of Portsmouth

Reading
Queen Anne's School

Winchester
St Swithun's School

Locations

- ✈ Leeds Bradford
- ✈ Liverpool
- ✈ Manchester
- ✈ East Midlands
- ✈ Birmingham
- ✈ Bristol
- ✈ Luton
- ✈ Stansted
- ✈ Heathrow
- ✈ London City
- ✈ Gatwick
- ✈ Edinburgh
- ✈ Cardiff

Individual location maps available on page 36-38
Date and availability dependant

Ministay

We run ministay programmes from August - May at all of our year-round centres. We offer English lessons with a flexible choice of excursions so groups can get the most of their short stay with UKLC.

Available at:
 Chester, University of Chester
 Crewe, Cheshire Campus
 Edinburgh, Newbattle Abbey College
 Portsmouth, University of Portsmouth
 Reading, Queen Anne's School (Easter only)
 Winchester, St Swithun's School (Easter and August only)

Duration: 6 or 7 nights

School Integration

Students get to experience a British high school first-hand. They attend a local school everyday, accompanied with a 'buddy', a local student who will show them around the school and spend the day with them.

Available at:
 Chester

Duration: 1, 2 or 3 week programmes available

Note: Groups can choose to do an integration only programme or compliment it with English Lessons and/ or excursions and activities.

Chester Homestay Ministay (6 night) Sample Programme

	Morning	Afternoon	Evening
Sun		Arrivals	
Mon	English Testing	Chester with City Walls Tour	
Tue	Lessons	Paparazzi Challenge	Dinner and Evening in Homestay with Hosts
Wed	Liverpool with The World Museum and Albert Docks		
Thur	Lessons	Lessons	
Fri	Lessons	Chester Cathedral	
Sat	Departures		

Crewe Residential Ministay (7 night) Sample Programme

	8.00-9.00	9.00-12.30	12.30-13.30	14.00-17.30	18.30-19.30	19.30-22.00	22.00
Sun		Arrivals					
Mon		English Testing	Lunch	Sports on campus			
Tue	Breakfast	Manchester with Museum of Science and Industry			Dinner	Evening Activity	Bedtime
Wed		Lessons	Lunch	Lessons			
Thur		Chester with Cathedral Visit or (optional) Roman Tour					
Fri		Lessons	Lunch	Lessons			
Sat		Optional Excursion or Vlogging Activities					
Sun	Departures						

These programmes are a sample only. Our dedicated Out of Summer Team will work with you to put together the right programme for you within your budget. Please contact marketing@uklc.org and they will be very happy to help.

Chester Homestay School Integration (6 night) Sample programme

	AM	PM
Sun		Arrivals
Mon		Chester with City Walls Tour
Tue		Local Community Survey
Wed	Full Day Integration in Local School (approx 9am - 3pm)	Paparazzi Challenge
Thur		Town Trail or Storyhouse Scavenger Hunt
Fri		Chester Cathedral
Sat	Departures	

These programmes are a sample only. Our dedicated Out of Summer Team will work with you to put together the right programme for you within your budget. Please contact marketing@uklc.org and they will be very happy to help.

Winter Programmes

If you're looking for a longer stay in the UK then we offer 2,3 or 4 week programmes in 2 of our centres around the UK. Students get to know the centre and destination well and experience a variety of excursions and activities.

Available at:

Chester, University of Chester
Crewe, Cheshire Campus

Duration: 2,3 or 4 week programmes available



Winter Sample Programme (3 week)

	Monday		Tuesday		Wednesday		Thursday		Friday		Saturday		Sunday		
	AM	PM	AM	PM	AM	PM	AM	PM	AM	PM	AM	PM	AM	PM	
Week 1	English Test	Chester Walking Tour with City Walls	English Lessons	Sports on Campus	English Lessons	Manchester with The Etihad Stadium Tour	English Lessons	Activities on Campus	English Lessons	Liverpool with Albert Docks & The Tate Art Gallery	London Walking Tour with Buckingham Palace, Big Ben, Houses of Parliament & Oxford Street		Free Time, Activities or Optional Excursion		
Week 2	English Lessons	Manchester with The Museum of Science & Industry	English Lessons	Vlogging Workshop	English Lessons	Cheshire Oaks Designer Outlet	English Lessons	Vlogging Workshop	English Lessons	Birmingham Museum & Art Gallery	York Walking Tour with The Shambles	Free Time, Activities or Optional Excursion			
Week 3	English Lessons	Chester Zoo	English Lessons	Vlogging Workshop	English Lessons	Liverpool with The Anfield Stadium Tour	English Lessons	Vlogging Workshop	English Lessons	Chester Town Centre & Shopping	London with The Natural History Museum & Hyde Park		Depart		

Winter Sample Programme + London/Paris Tour

	Monday		Tuesday		Wednesday		Thursday		Friday		Saturday		Sunday		
	AM	PM	AM	PM	AM	PM	AM	PM	AM	PM	AM	PM	AM	PM	
Week 1	English Test	Chester with Walking Tour and Cathedral	English Lessons	Activities on campus	English Lessons	Manchester with The Etihad Stadium Tour	English Lessons	Vlogging Workshop 'Our time in the UK'	English Lessons	Cheshire Oaks Designer Outlet Village	Liverpool with Albert Dock and Museum of Liverpool		Free Time, Activities or Optional Excursion		
Week 2	English Lessons	Chester with River Dee Boat Cruise	English Lessons	Activities on campus	English Lessons	Jodrell Bank Observatory	English Lessons	Vlogging Workshop 'Our time in the UK'	English Lessons	Manchester with Museum of Science and Industry	York Walking Tour with The Shambles	Depart Crewe for London. Guided Tour of London			
Week 3	London Tour with London Eye, River Cruise, British Museum, Oxford Street and West End Show		Buckingham Palace, Westminster, Trafalgar Square, Tower of London or Football Stadium Tour		Eurostar London to Paris with Champs Elysees by night		Eiffel Tower, Seine River Cruise, Louvre		Disneyland Paris		Depart transfer to Paris Airport				

These programmes are a sample only. Our dedicated Out of Summer Team will work with you to put together the right programme for you within your budget. Please contact marketing@uklc.org and they will be very happy to help.

PCTO

This programme is designed to fulfil the Italian government's PCTO funding requirements. Students focus on preparing for the world of work whilst developing their English skills. They look at 21st century skills including programme problem solving, communication and collaboration skills.

Available at:
 Chester, University of Chester
 Crewe, Cheshire Campus
 Edinburgh, Newbattle Abbey College
 Portsmouth, University of Portsmouth

Duration: 1-2 weeks

Chester Homestay PCTO (7 night) Sample programme

	AM	PM
Sun	Arrivals	
Mon	Language Learning	Chester with Walking Tour/City Walls
Tue	CV and Cover Letter	Job Interview Success
Wed	Chester with Cathedral and River Cruise	
Thur	Market Research and Product Development	Paparazzi Challenge: Local Business Focus
Fri	Presentation Skills	UKLC's Dragon Den
Sat	Liverpool with the World Museum and Albert Dock	

Crewe Residential PCTO (7 night) Sample programme

	AM	PM
Sun		Arrivals
Mon	Language Learning	CV and Cover Letter
Tue	Job Interview Success	Paparazzi Challenge
Wed	Market Research and Product Development	Vlogging: Social Media in the World of Work
Thur	Chester with Cathedral Visit or (optional) Roman Tour	
Fri	Presentation Skills	UKLC's Dragon Den
Sat	Manchester with Museum of Science and Industry	

These programmes are a sample only. Our dedicated Out of Summer Team will work with you to put together the right programme for you within your budget. Please contact marketing@uklc.org and they will be very happy to help.

English for Specific Purposes

This programme allows groups to choose their academic focus and is available at any of our centres. Groups can choose from a variety of topics, all delivered in English so students develop their English language skills and confidence in using English. We also offer exam preparation courses to complement our English courses.

Available at:
 Chester, University of Chester
 Crewe, Cheshire Campus
 Edinburgh, Newbattle Abbey College
 London, Queen Mary University
 Portsmouth, University of Portsmouth
 Reading, Queen Anne's School (Easter only)
 Winchester, St Swithun's School (Easter only)

Duration: Any

Suggested Course Options
 English plus AI
 English plus STEM
 English plus Sports
 English plus Football
 English for Academic Purposes
 English and Cambridge Preparation
 English and IELTS Preparation

Chester Homestay English Plus STEM (6 night) Sample Programme

	AM	PM
Sun	Arrivals	
Mon	English with STEM Lesson (Science - How Things Move - Forces and Motion)	STEM Challenge - Protect the Egg (Egg Drop Experiment)
Tue	Manchester with Museum of Science and Industry	
Wed	English with STEM Lesson (Technology - Coding Basics)	English with STEM Lesson (Engineering - Building Strong Structures)
Thur	Centre for Alternative Technology (CAT) in North Wales	
Fri	English with STEM Lesson (Mathematics - Shapes and Patterns Around Us)	English with STEM Lesson (Environmental Science - Renewable vs Non-Renewable Energy)
Sat	Departures	

These programmes are a sample only. Our dedicated Out of Summer Team will work with you to put together the right programme for you within your budget. Please contact marketing@uklc.org and they will be very happy to help.

Year Round Centres

We have several centres for you to choose from. We have a variety of centres including homestay and residential accommodation. All centres are within 2 hours of an international airport.

“

I always recommend UKLC and their ministay programmes, I have sent groups to their centres every year for a very long time. The team is professional and caring which makes them a trusted partner for me.

**Alicia, Educational Tour Operator,
Spain 2024**

”



Chester

- ★ Year round accommodation
- ★ Lessons take place in central Chester
- ★ Excursions to Liverpool, Manchester, and Wales

Programme info



Dates
Year-round



Transfers
Manchester - 45 minutes
Liverpool - 1 hour
Birmingham - 1 hour 30 mins



Age Ranges
12-17



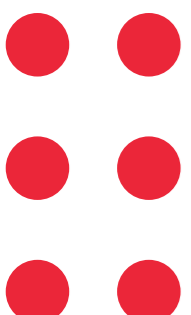
Excursion Suggestions
Chester with City Walls Tour
Liverpool with The World Museum and Albert Docks
Chester Cathedral



Programmes
Ministays
School Intergration
Winter PCTO
English for Specific Purposes



Accommodation
Homestay



Chester

Homestay

The Centre

Students stay with local hosts provided by our sister homestay company. Homestay gives students the experience of living in a British home and being fully immersed in English. Students get to know their hosts during their stay and learn about a new culture.

The Location

The city was founded as a Roman fort 2000 years ago with the name Deva Vitrix and is now a must-see European destination. The vibrant city centre boasts a mix of cafés and shops next to ancient Roman walls, rows, an amphitheatre, historic architecture and archaeological features. With Grosvenor Park, the River Dee and The Shropshire Union Canal there are plenty of outdoor spaces to enjoy too.



Chester



Students



Homestay Accommodation



Students on excursion

NEW



Crewe

- ★ Close to Chester, Manchester and London
- ★ En-suite rooms
- ★ Spacious modern classrooms

Programme info



Dates
Year-round



Facilities
Sports hall
Evening space
Sports facilities



Age Ranges
11-17 (closed groups 18+)



Transfers
Manchester - 45 mins
Liverpool - 1 hour 10 mins
Heathrow - 3 hours 20 mins



Programmes
Ministays
Winter
PCTO
English for Specific Purposes



Excursion Suggestions
Manchester with Museum of Science and Industry
Chester with Cathedral Visit
Roman Tour
Liverpool with World Museum and Albert Dock
York with Walking Tour and Shambles



Accommodation
Single en-suite rooms



Additional Options
London day trip

Crewe

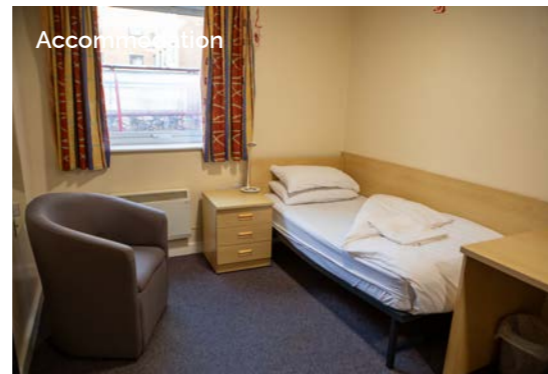
Cheshire Campus

The Centre

Apollo Buckingham opened as a school of medicine in 1916 and was the first school campus in the UK to specialise in healthcare. The closed campus is a short walk to the town centre and offers modern classrooms and sports facilities.

The Location

Perfectly situated within the Northwest of England, Crewe is close to the 3 largest and most visited cities of Chester, Manchester and Liverpool which students can explore as part of their programme.



Accommodation



Student in Class



Roman Tour



Apollo Buckingham



Edinburgh

- ★ Year-round residence
- ★ Quiet rural location ideal for junior students
- ★ Close to the historical city of Edinburgh

Programme info

-  **Dates**
Year-round
-  **Age Ranges**
11-17
-  **Programmes**
Ministays
PCTO
English for Specific Purposes
-  **Facilities**
Common room
Crypt
Social spaces
Gardens and woodland
-  **Transfers**
Edinburgh – 25 mins
Glasgow – 1 hour 10 mins
Newcastle – 2 hours 10 mins
Manchester – 4 hours
-  **Excursion Suggestions**
Edinburgh Zoo
Edinburgh Castle
National Museum of Scotland
Scottish National Gallery
St Giles Cathedral
-  **Accommodation**
Single rooms with shared bathroom
Single en-suite rooms
Twin rooms with shared bathroom
Triple rooms with shared bathroom

Edinburgh

Newbattle Abbey College

The Centre
The beautiful residential campus of Newbattle Abbey College is situated only 8 miles from the city centre. The main building was constructed in the 16th century and is set in 125 acres of parkland and woodland.

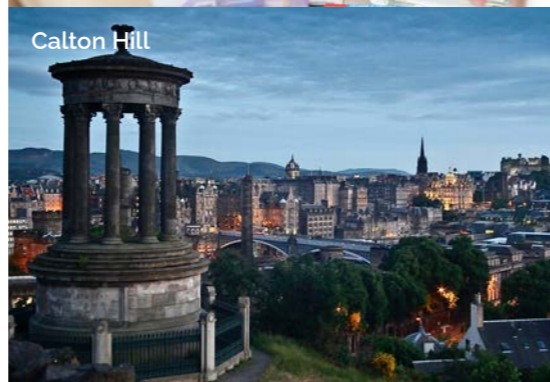
The Location
As the capital city of Scotland, Edinburgh is recognised worldwide as a place of great history, architecture and culture. There is plenty for students to explore including the castle, the cathedral, museums and galleries. Walk up to Arthur's Seat for some great views of the city and walk along the Royal Mile in the old town and enjoy the architecture, cafés and shops.



Edinburgh Castle



Student in Class

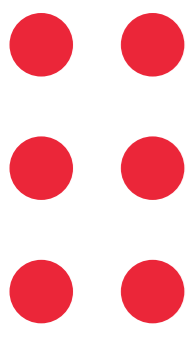


Calton Hill



Newbattle Abbey College

NEW




- ★ City centre location
- ★ Varied programme including beach and coastal attraction and city visits
- ★ Single en-suite rooms



Programme info


 **Dates**
Year-round


 **Age Ranges**
11-17

 **Programmes**
Ministays
PCTO
English for Specific Purposes

 **Accommodation**
Single en-suite rooms

 **Facilities**
Evening event spaces
Sports centre
Swimming pool
Indoor tennis courts

 **Transfers**
Gatwick - 1 hour 15 mins
Heathrow - 1 hour 15 mins
Stansted - 2 hour 15 mins

 **Excursions Suggestions**
Walking tour of Portsmouth
Oxford with Pitt Rivers Museum
Gunwharf Quays & Spinnaker Tower
London Walking Tour and Oxford Street
Arundel with Arundel Castle
Brighton and entry to the Royal Pavilion

Portsmouth

University of Portsmouth

The Centre

Portsmouth university opened in 1908 as a municipal college and library and over the years has developed into a top choice university in the south of England. Over 70 million pounds has been invested into new buildings and facilities in the past 10 years.

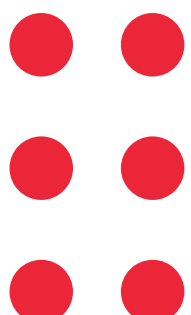
The Location

The campus is located in the city centre within walking distance of the beautiful beaches and traditional seaside piers. Portsmouth hosts a wide range of attractions and places to visit and is close to both Brighton and London. The residence is a 5 minute walk away from the classrooms.





Reading



- ★ Classic boarding school with easy access to London
- ★ Excellent sports and performing arts facilities
- ★ Two full day excursions to London and one to Oxford



Programme info

- Dates**
Easter
- Age Ranges**
8-17
- Programmes**
Ministays
PCTO
English for Specific Purposes
- Accommodation**
Single rooms with shared bathrooms
Twin rooms with shared bathrooms
Multi-bedded rooms (3-5) with shared bathrooms

- Facilities**
Outdoor sports fields
Drama studio
Dance studios
Indoor swimming pool
Indoor sports hall
Tennis courts
Netball courts

- Transfers**
Gatwick - 1 hour 20 mins
Heathrow - 40 mins
Stansted - 1 hour 35 mins

- Excursions**
Caversham Walking Tour
Oxford with Natural History Museum
Reading with Reading Museum
Oxford with Pitt Rivers Museum
London by train



Reading

Queen Anne's School

The Centre
Queen Anne's School has a history which dates back to 1698. It is situated in a closed campus with 35 acres of extensive landscaped grounds, just north of the River Thames. The grounds combine traditional Victorian architecture with new and contemporary buildings to provide cutting-edge facilities, all of which are just a one and a half mile walk from the centre of Reading.

The Location
Reading is a large town in the Royal County of Berkshire. It has been important since medieval times, and the ruins of Reading Abbey, a monastery with strong royal connections, can still be visited. The town itself straddles the River Thames and benefits greatly from tourism due to its close proximity to the capital city.

NEW

Winchester



- ★ Traditional Boarding School
- ★ Spacious Grounds
- ★ Two full day excursions to London

Programme info



Dates
Easter & August



Age Ranges
8-17



Programmes
Ministays
PCTO
English for Specific Purposes



Accommodation
Single with shared bathrooms
Multi-bedded rooms (up to 4) with shared bathrooms



Facilities
Outdoor sports fields
Theatre
Indoor swimming pool
Indoor sports hall
Tennis court



Transfers
Gatwick - 1 hour 20 mins
Heathrow - 40 mins
Stansted - 1 hour 35 mins



Excursions
Winchester Orientation Tour and City Museum
Oxford Walking Tour

Winchester

St Swithun's School

The Centre

St Swithun's school was started in 1883 by the Dean of Winchester's daughter to provide a 'sound and thorough' education to students. Nowadays the campus offers excellent facilities in a beautiful, green location.

The Location

The school is within walking distance of the city of Winchester and has stunning views of the Hampshire Downs. Winchester has lots of things for students to see and do and is conveniently located close to both London and Bath.

Winchester Cathedral



Students in Class



Boarding House



More information



“

The activities here are so much fun. We have visited two museums, been on a boat ride and we went to a football stadium. I like visiting the city and walking around with my friends. I love playing sports at the school and going to the disco.

*Carlos from Spain,
University of Chester, 2024*

”

English Lessons



We know how important it is for each individual student to find their own path in language learning. We use a wide range of methods to engage and stimulate our students. This is why we have created a curriculum based on the students' age, level and needs, structured into three different programmes:

Year-round Programmes

We can offer alternative, bespoke English language lessons for our ministay groups. We can deliver a range of English for Specific Purposes courses on request so please contact the team to discuss your group's requirements.

Fun (ages 8-11)

Engaging lessons that offer a wide range of material and activities specific for our young learners. It makes games into lessons and lessons into games.

Connection (ages 11-14)

Dynamic lessons that include a variety of topics and media, especially designed to reflect the quick-paced interactive world our younger students are growing up in. Available in levels A1-C1.

Action (ages 14-17)

Lessons specifically designed to engage our older students through more suitable tasks, topics and contemporary issues. Available in levels A1-C1.



The Connection and Action programmes consist of three different lessons a day:

TBL (Task-Based Learning)

During these lessons students are encouraged to complete a task. New language is acquired and skills developed through the task as the students speak and work together.

S&S (Skills and Systems)

These lessons aim to empower our students' linguistic awareness and capabilities by working on all language skills (reading, writing, listening, speaking) and systems (grammar, phonology, lexis, discourse), as well as using materials relevant to exam preparation (KET, PET, FCE, CAE, TOEFL, IELTS, GESE).

CLIL (Content and Language Integrated Learning)

These lessons merge CLIL and British Culture. Students learn about art, literature, and science, or about the history and the geography of the UK, while activating their linguistic knowledge.

Placement Tests

We offer classes at all levels from Elementary to Advanced. Students take a placement on arrival to ensure they are placed at the correct level.* We also offer a specific test for students with special needs.

Examinations

We offer the option of taking the Trinity College London Graded Examination in Spoken English (GESE) on site for courses of 10 days or longer.**

*Due to the variability of students' test results, a single class may occasionally include students of slightly different levels.

**Minimum of 10 students across all groups required to source an examiner.

Accommodation

At UKLC we provide full-board accommodation at all of our centres with options to suit different preferences and budgets. We know that choosing the right accommodation option is as important as the right programme and our team are here to guide you through the choices. We work closely with our accommodation partners to deliver safe and comfortable accommodation for our students and group leaders.

Homestay

Our homestay option gives students the experience of living in a British home and being fully immersed in English. Students get to know their hosts during their stay and learn about a new culture. Travel passes are provided for students and they are given detailed instructions for travelling to the school.

Breakfasts and evening meals are provided by the hosts at the homestay. For lunch students are provided with packed lunches from the hosts.

Available at:
Chester

In Chester, our homestay accommodation option is provided by our sister homestay company.

Residence

Most of our residences are onsite and easily accessible from the classrooms, social spaces and canteen. We have a mix of university accommodation and boarding school accommodation depending on the centre. Across our different schools we have single, twin and multibedded rooms, some with en-suite bathrooms and some shared.

Available at:

Broadstairs, Wellesley Haddon Dene
Crewe, Cheshire Campus
Edinburgh, Newbattle Abbey College
Portsmouth, University of Portsmouth
Reading, Queen Anne's School
Winchester, St Swithun's School

“

My bedroom is very nice. I am staying with girls from Spain and Italy and we talk and laugh a lot. I feel very safe here, there is always someone to help. The food is very good!

**Camille from France,
Queen Anne's, Reading, 2024**

”

Photo depicts Homestay

Welfare

As specialists in programmes for young people aged 8-17, the safeguarding of children is fundamental to the way UKLC views and ensures the well-being of its students. We have developed robust systems and processes for managing the welfare of children in our centres.

Steps we take to ensure the welfare of students;

- All staff undergo appropriate background and safeguarding checks.
- For year-round groups our Ministay Coordinators manage safeguarding and welfare support.
- All students are given an induction lesson highlighting the rules for their centre and all group leaders attend an induction meeting when they arrive which details their responsibilities.
- We work with group leaders to ensure their students have a safe and enjoyable stay, taking full responsibility for students when they are in lessons and on scheduled activities. We assist group leaders to ensure students' safety and care outside of scheduled activities and during excursions.
- UKLC staff are available 24 hours a day for any issue that may arise and there is a 24-hour emergency number for partners, parents and students.
- All students get a UKLC wristband and lanyard to be worn at all times.
- Our Operations and Safeguarding Handbook is distributed to all staff and is available to download on the website. Policies and procedures for welfare and safeguarding are available on our website and in our downloadable handbooks.

Student Resilience and Wellbeing

Whilst the physical welfare and safety of our students has always been important, we believe that we need to focus on their mental welfare too. In recent years there has been a greater awareness of mental health in young people. An experience away from home, especially in current global climate, is an opportunity to strengthen that.

Along with sessions on General Safety and e-Safety, we have introduced a new session for every student. We dedicate lesson time to "Resilience and Well-being". It will help students to process the ever-changing world around them and their ability to adapt to it. We also offer them ideas and tools to manage their own well-being.

Maps

These maps are an indication of the centre and attraction locations.



Liverpool
(40 minutes by train)

Manchester
(35 minutes by train)

Chester
(20 minutes by train)

Crewe

Queens Park
Lyceum Theatre
Heritage Centre
Cheshire Campus

Birmingham
(1 hour by train)

London
(1 hour 40 minutes by train)

Whale Island

Portsmouth Historic Dockyard

Spinnaker Tower

Old Portsmouth

Charles Dickens' Birthplace

Portsmouth Guildhall

Gunwharf Quays

Southsea Common

Portsmouth

University of Portsmouth



UKLC

**UKLC, Suite 1d, Rossett Business Village, Rossett,
Nr Chester, LL12 0AY, United Kingdom**

Tel: 0044 1244 577 995
E-mail: marketing@uklc.org
Web: uklc.org

uklc.org