



English Language Courses for Young Learners (ages 8-17)  
2020 Summer Programmes

Accredited by the  
**BRITISH COUNCIL**  
for the teaching  
of English in the UK



**ALTO** Association of  
Language Travel  
Organisations



# CONTENTS

3	Welcome	12	University of Chester - Riverside	24	Reading, Queen Anne's School
4	About UKLC	14	University of Chichester	26	York, Bootham School
5	Locations	16	King's College London	28	York, St Peter's School
6	Summer Language Programmes	18	Queen Mary University of London	30	Summer Programmes for Individuals
8	Bristol, Badminton School	20	Manchester, Chetham's School	32	Academic Tuition
10	University of Chester - Parkgate	22	Nantwich, Reaseheath College	34	Welfare

# WELCOME

UKLC is a leading provider of language programmes in the UK for students aged 8-17. Our mission is to educate, inspire and enrich the lives of young people from all over the world through English Language, Sports, and British Culture.

We pride ourselves on our strong relationships with partner agencies. We understand that agents need high-quality partners in the UK in order to satisfy their own clients, who will generate word-of-mouth marketing when they return home. Our relationship is built on trust. We work with you and your group leaders to ensure that the safety of your students is the priority throughout all of our centres.

We understand that the success of our business is inseparable from the success of the agents we work with. We will work with you to create attractive marketing material to sell our courses. We help with the details of getting groups to our schools; supporting you during the visa application process and finding the most cost-effective transfers from each airport.



## TEAMWORK!

*While travelling around our centres this summer, I have been so happy to see real teamwork in action, from the incredible dedication of the UKLC staff teams working tirelessly to provide an excellent service, to the interaction with the many visiting Group Leaders collaborating with us for the benefit of their students. This teamwork starts many months before the summer kicks in, as we, at Head Office, work closely with our agent partners to find just the right centre and programme for each student. We have increased the size of our team, in order to make sure that all communication and preparation continues at the high standard that our partners have come to expect from us.*

*A highlight of the past year for UKLC was being listed as an EL Gazette "Centre of Excellence" based on our British Council inspection. We were awarded strengths in 9 areas, which reflected the attention and work that we continuously put into analysing where and how we can improve, and into implementing change. I believe that both teamwork and this constant strive for improvement make us one of the best junior providers in the UK.*

*For 2020 we are improving our offering even more, with the addition of an exciting new centre in London. Queen Mary University of London (Mile End Campus) provides a brilliant location for younger students to explore the capital. We are also pleased to be developing new areas under the UKLC brand, such as work experience programmes, teacher training projects and a new STEM summer camp in Chester, all part of our commitment to remain innovative and respond to what our partners want.*

**Céline Aloé**  
Director, UKLC

# About UKLC

UKLC provides residential and homestay English language and activity programmes for students aged 8 -17 years. We are recognised for delivering great quality and value, together with an excellent, personal service.



Students in lessons



Students

Students on London Eye

## Our Centres

- 11 top-class centres across the UK
- Traditional British boarding schools & modern university campuses
- Historic, vibrant cities and charming towns
- All centres within 2 hours of a major international airport, ensuring easy access on arrival and departure

## Our Objective

Our objective is to enable students of all abilities to improve their English in a safe, relaxed, comfortable, and friendly environment, while enjoying the best experience of life in the UK. We deliver our programmes in high-quality centres with staff who are carefully selected for their qualifications and experience in either language tuition or sports coaching, as well as their enthusiasm and ability to motivate and engage young people.

## Our Agents

We work exclusively with approved agents with whom we aim to build long-lasting relationships. If you are looking for a study travel agent in your area, or you would like to become one of our agents, please contact us.

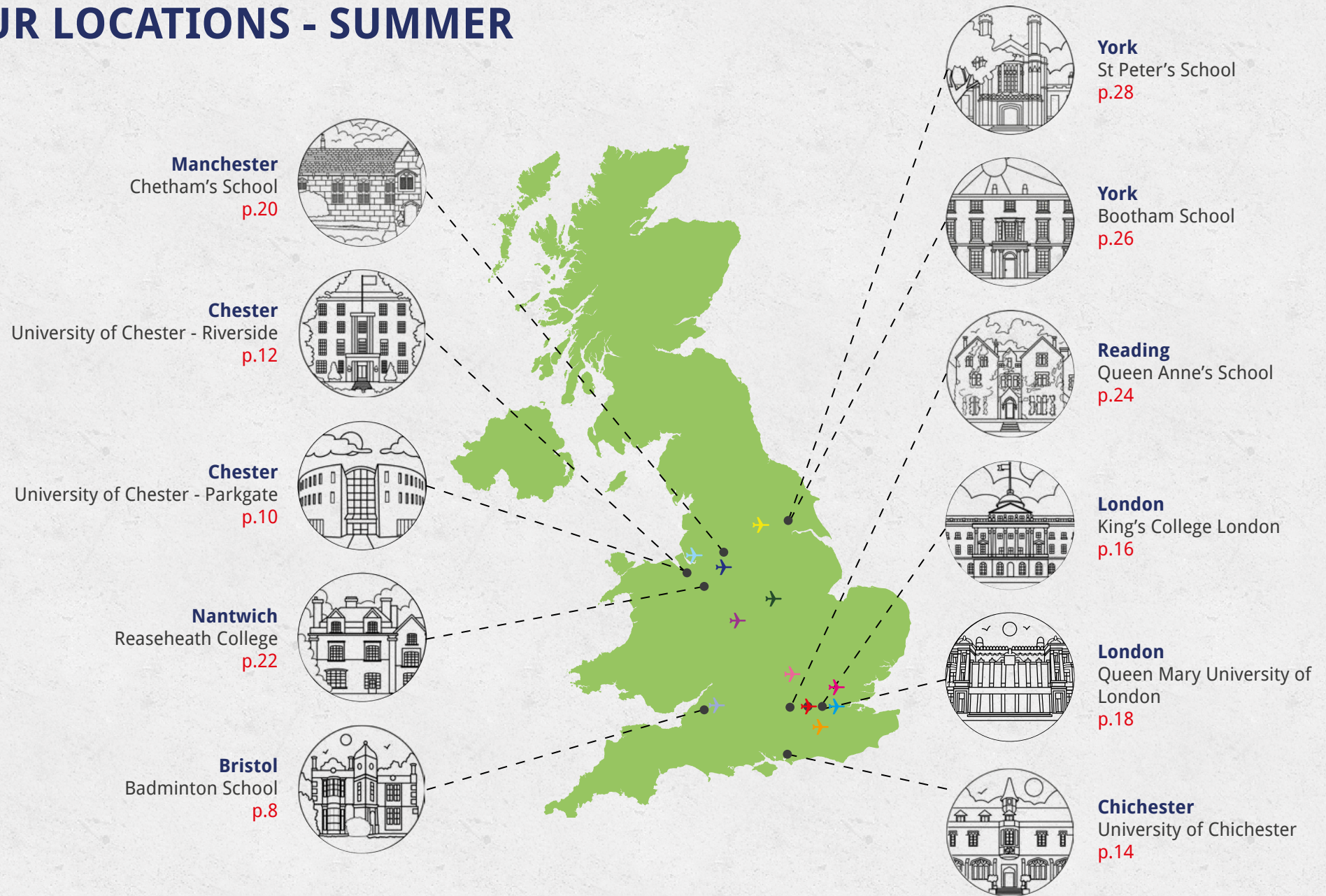


Group leaders

*"It was a pleasure to work with you. Your attention to all the children's needs was above and beyond expectations. You helped a lot and you made my stay here easier. Thanks a million."*

**Group Leader**

# OUR LOCATIONS - SUMMER



✈ Gatwick  
 ✈ Stansted  
 ✈ Heathrow  
 ✈ London City  
 ✈ Manchester  
 ✈ Leeds Bradford  
 ✈ Liverpool  
 ✈ Birmingham  
 ✈ Bristol  
 ✈ Luton  
 ✈ East Midlands

For more information visit [www.uklanguagecourses.com](http://www.uklanguagecourses.com)

# Summer Language Programmes

UKLC offers high-quality international summer camps at 11 residential locations across the UK. We deliver a range of programmes at each location to suit the ages, levels and interests of the students. Our courses are available for the following age ranges: 8 - 11, 11 - 14 and 14 - 17\*.

Students who are aged 8 to 11 will follow the Young Learners course for lessons and some activities. Students aged between 11 and 17 who are enrolled on Multi-Activity or English Plus courses will be divided by age for activities where numbers allow. Students can choose whether to enrol on the Multi-Activity or English Plus course, or follow a level-specific Intensive English course.\*\*



Students in dance studio

## Available Programmes\*\*\*

### English Plus Multi-Activity

The “typical” summer programme consisting of a wide variety of activities and sports. Sessions are structured and are coached by specialist staff. Sessions can include tennis, basketball, volleyball, swimming, photography workshops, dance, football, drama etc. Students take part in two or three activities on rotation in each session.

### English Plus Dance

For students with a passion for dance. Sessions are led by a specialist dance teacher and the programme works towards an end-of-course performance. Sessions begin with a warm up before the introduction of new steps and techniques needed to create a dance routine. The second part of the sessions allows students to practise what they have learnt and rehearse routines for the final performance. Styles can include street dance, modern jazz, contemporary and West End musical.

### English Plus Drama

For students with an interest in drama and a desire to improve their English through confidence-building performances. Sessions are led by a teacher who will guide the students through a programme exploring various elements of acting, including improvisation, mime and role play. At the end of the course they will perform part of a well-known play or something they have written themselves.



Students on Roman Tour in Chester

## English Plus Football

For students who love football and want to play it every waking minute! Coaching sessions are led by qualified staff and aim to improve each student's technical skills and abilities. Students will also build on their understanding of match tactics and playing systems. There are regular small-sided matches and a weekly competition.

## English Plus Intensive English

This programme consists of additional English lessons for those who really want to maximise their language learning during their stay in the UK. Students will build on the knowledge acquired in their curricular lessons through extra classes taught according to age and level. The content of these lessons will be an enhancement of the curricular programme as outlined in the accompanying Academic Summary (see section on "Academic Tuition").

## English Plus Life Skills (ASL)

For students aged 14 - 17 who want more from their summer school experience. The purpose is to develop students in a way that is going to be useful to them as they go on to become young adults. They will undertake seminars and workshops on topics such as "CV writing", "Interview skills", "Presentation skills", "Writing for academic purposes", "Projecting confidence, competence and credibility" etc. Elements of this will be incorporated into project work that will be presented at the end of the course.

## English Plus Media (ASL)

This course combines English language learning with real-world experiences and technical-creative teaching. Students will engage in different media-based projects including journalism, social media, advertising, and media production and editing, all while using the English language in a very creative and expressive way.

\*Please note UKLC adheres to the advertised age ranges but understands that slightly younger/older students may come in a group. UKLC reserves the right to accept students who are slightly younger or older than the advertised minimum/maximum age. The minimum stay is 1 week and the maximum is 6 weeks.

\*\*Students who have not selected a programme by 31st May or who enrol after that will join the Multi-Activity programme. All students aged 8-10 will join a Multi-Activity programme.

\*\*\*These programmes vary at each centre. A minimum of 10 students applies to each programme and each student will be asked to select a 1st and 2nd option before arrival which they will join for the duration of their stay. Students who do not select in advance will join the standard English Plus Multi-Activity programme.

For more information visit [www.uklanguagecourses.com](http://www.uklanguagecourses.com)

## What's included:

- Full-board accommodation in residence or homestay
- Full programme of excursions, activities and evening entertainment
- Elective 'English Plus' activities
- Evening conversation clubs
- 1 free group leader for 15 students
- Placement Test on arrival and End-of-Course Certificate



Students on town trail



Students in class

*"It's a beautiful experience that changes your life and improves of course your English but also your personality."*

**Student, Nantwich 2019**



# Bristol Badminton School

Bristol is one of Britain's favourite cities. It has a proud maritime history and it is from here that many of England's great explorers set off to travel the world. Now a thriving cultural centre and the country's 11th biggest city, in 2017 Bristol topped the Sunday Times rankings of best places to live in Britain and was listed 4th in the Rough Guides' top ten cities to visit worldwide.

Badminton School itself is set in stunning walled grounds in Westbury-on-Trym on the outskirts of Bristol. It is a beautiful mixture of old and new buildings surrounded by glorious gardens. The accommodation has bright and airy bedrooms and comfortable common rooms - many of them with fantastic views over Bristol.



Beautiful  
English Boarding  
School



Badminton School



Group Leader

*"I think UKLC is a great organization: we were all very happy about all services, teaching and entertainment."*

**Group Leader, Chichester 2018**



# Why Choose This Centre:

- Classic British Boarding School
- Excellent sports and performing arts facilities
- Excursions to Bath, Bristol and Oxford

**Dates for 2020:** Sunday 5th July - Sunday 16th August



SS Great Britain Excursion

Students on Excursion

## Facilities

- 25m indoor swimming pool
- All-weather sports pitch
- Tennis courts
- Netball courts
- Indoor sports hall
- Gymnasium

## Accommodation

- Homestay\*
- Single rooms
- Twin rooms
- Multi-bed (3-4) rooms

## Age Ranges

- 8 - 11 year-olds
- 11 - 14 year-olds
- 14 - 17 year-olds

## Transfers

- Bristol - 25 minutes
- Birmingham - 1 hour 40 minutes
- Heathrow - 2 hours

## Programmes

- English Plus Multi-Activity
- English Plus Dance
- English Plus Drama
- English Plus Football
- English Plus Intensive English
- English Plus Life Skills

## Excursions & Visits

- Wales with Chepstow Castle
- Cardiff with Boat Trip
- Bath with Roman Baths
- Cheddar Gorge
- Bristol with SS Great Britain



## Sample Programme - Two Weeks

	Morning	Afternoon	Evening
<b>Monday</b>	English Test	Multi-Activity or Chosen Programme	Murder Mystery
<b>Tuesday</b>	English Lessons	<b>Bristol Orientation &amp; M Shed</b>	Casino Night or Conversation Club
<b>Wednesday</b>	English Lessons	Multi-Activity or Chosen Programme	Trashion Show
<b>Thursday</b>	English Lessons	<b>Wales with Chepstow Castle</b>	Disco
<b>Friday</b>	English Lessons	Multi-Activity or Chosen Programme	Red vs. Blue
<b>Saturday</b>	<b>Cardiff with Boat Trip</b>		Attractions
<b>Sunday</b>	<b>Optional Excursion to London with Walking Tour, British Museum &amp; London Eye</b>		Film Night
<b>Monday</b>	English Lessons	Multi-Activity or Chosen Programme	Karaoke or Conversation Club
<b>Tuesday</b>	English Lessons	<b>Bristol with SS Great Britain</b>	Paparazzi
<b>Wednesday</b>	English Lessons	Multi-Activity or Chosen Programme	Mini Olympics
<b>Thursday</b>	English Lessons	<b>Cheddar with Cheddar Gorge</b>	Oscars
<b>Friday</b>	English Lessons	Multi-Activity or Chosen Programme	Talent Show
<b>Saturday</b>	<b>Bath World Heritage Site with Roman Baths</b>		Leaving Disco
<b>Sunday</b>	Depart		

\*Homestay accommodation is provided by an independent local organisation

For more information visit [www.uklanguagecourses.com](http://www.uklanguagecourses.com)

# Chester University of Chester - Parkgate

Chester is a very modern university but with a history dating back to 1839. The eclectic mix of modern and historical buildings combine to create an attractive campus. The university is set in a city that was founded as a Roman fort 2000 years ago with the name Deva Vitrix and is now becoming a must-see European destination.

The campus itself is just a short walk away from the vibrant city centre with its mix of cafes, shops and ancient walls, rows, amphitheatre, historic architecture and archaeological features.

Residence & Homestay Available



University of Chester



Students on Roman Tour



Student



Student playing football

*"Thank you for this amazing adventure in Chester. It was my first experience as a group leader with UKLC and you set the bar really high. The whole team is amazing!"*

**Group Leader, Chester 2018**

# Why Choose This Centre:

- Great location, a 10-minute walk from city centre
- Lovely closed campus with modern facilities
- Excursions to Liverpool, Manchester, Llangollen and Conwy

**Dates for 2020:** Sunday 5th July - Sunday 17th August



Group of students



Roman Guide

## Facilities

- Tennis courts
- 3G Astro-turf pitches
- Dance studio
- Indoor swimming pool
- Large sports hall

## Accommodation

- Homestay\*
- Single en-suite rooms
- Twin en-suite rooms
- Single rooms

## Age Ranges

- 11 - 14 year-olds
- 14 - 17 year-olds

## Transfers

- Manchester - 35 minutes
- Liverpool - 40 minutes
- Heathrow - 3 hours 20 minutes

\*Homestay accommodation is provided by an independent local organisation

## Programmes

- English Plus Multi-Activity
- English Plus Dance
- English Plus Drama
- English Plus Football
- English Plus Intensive English
- English Plus Life Skills
- English Plus Media

## Excursions & Visits

- Wales with Conwy Castle
- Chester with Cathedral
- Chester with Roman Tour & Cheshire Military Museum
- Liverpool with Beatles Story
- Manchester with City of Manchester Stadium Tour
- Llandudno with Great Orme Tramway



## Sample Programme - Two Weeks

	Morning	Afternoon	Evening
<b>Monday</b>	English Test	Multi-Activity or Chosen Programme	Message Disco
<b>Tuesday</b>	English Lessons	<b>Chester Orientation &amp; Chester Cathedral</b>	Paparazzi or Conversation Club
<b>Wednesday</b>	English Lessons	Multi-Activity or Chosen Programme	Quiz Night
<b>Thursday</b>	English Lessons	<b>Wales with Conwy Castle</b>	Mini-Olympics or Conversation Club
<b>Friday</b>	English Lessons	Multi-Activity or Chosen Programme	Karaoke
<b>Saturday</b>	<b>Liverpool with Beatles Story</b>		Attractions
<b>Sunday</b>	Free Time, Activities or Optional Excursion		Film Night
<b>Monday</b>	Multi-Activity or Chosen Programme	English Lessons	Red Vs. Blue
<b>Tuesday</b>	<b>Cheshire Military Museum &amp; Roman Tour</b>	English Lessons	Trashion Show or Conversation Club
<b>Wednesday</b>	Multi-Activity or Chosen Programme	English Lessons	Oscars
<b>Thursday</b>	<b>Llandudno with Great Orme Tramway</b>	English Lessons	Around the World or Conversation Club
<b>Friday</b>	Multi-Activity or Chosen Programme	English Lessons	Talent Show
<b>Saturday</b>	<b>Manchester with City of Manchester Stadium Tour</b>		Leaving Disco
<b>Sunday</b>	Depart		

# Chester University of Chester - Riverside

Chester is one of the UK's most beautiful cities and its charm attracts visitors from all over the world. Its history is visible in the Roman City Walls that surround the city and the medieval half-timbered buildings on display in its streets.

The University of Chester's Riverside campus is situated in a beautiful location facing the River Dee. It sits adjacent to the ancient city walls and the building itself was formerly the County Hall, which explains its grandiose appearance. Visitors to this campus will really experience the historic city of Chester with the daily 12-minute walk to get to the accommodation at Sumner House, previously a hotel, or on a stroll along the walls.

Chester town centre



Conwy Castle



Students on excursion

*"The school, the families and the organization were 10/10. Especially, I have to highlight the professionalism of UKLC and its workers who did a brilliant job with the students."*

**Group Leader, Chester 2018**

# Why Choose This Centre:

- Amazing riverside location in heart of the city
- A real UK university experience for more mature students
- Excursions to Liverpool, Manchester, Llandudno and Conwy

Dates for 2020 : Sunday 5th July - Sunday 2nd August



Students on excursion



Students in class

## Facilities

- Lecture Halls
- Seminar Rooms
- Great Hall

## Accommodation

- Homestay\*
- Single en-suite rooms
- Twin en-suite rooms

## Age Ranges

- 13 - 14 year-olds
- 14 - 17 year-olds

## Transfers

- Manchester - 35 minutes
- Liverpool - 40 minutes
- Heathrow - 3 hours 20 minutes

## Programmes

- English Plus Drama
- English Plus Intensive English
- English Plus Life Skills

## Excursions & Visits

- Wales with Conwy Castle
- Chester with Cathedral
- Chester with Roman Tour & Cheshire Military Museum
- Liverpool with Beatles Story
- Manchester with City of Manchester Stadium Tour
- Llandudno with Great Orme Tramway



\*Homestay accommodation is provided by an independent local organisation

For more information visit [www.uklanguagecourses.com](http://www.uklanguagecourses.com)

## Sample Programme - Two Weeks

	Morning	Afternoon	Evening
<b>Monday</b>	English Test	Multi-Activity or Chosen Programme	Message Disco
<b>Tuesday</b>	English Lessons	Chester Orientation & Chester Cathedral	Paparazzi or Conversation Club
<b>Wednesday</b>	English Lessons	Multi-Activity or Chosen Programme	Quiz Night
<b>Thursday</b>	English Project Work	Wales with Conwy Castle	Mini Olympics or Conversation Club
<b>Friday</b>	English Lessons	Multi-Activity or Chosen Programme	Karaoke
<b>Saturday</b>	Liverpool with Beatles Story		Red vs Blue
<b>Sunday</b>	Free Time, Activities or Optional Excursion		Film Night
<b>Monday</b>	English Lessons	Multi-Activity or Chosen Programme	Treasure Hunt
<b>Tuesday</b>	English Lessons	Cheshire Military Museum & Roman Tour	Trashion Show or Conversation Club
<b>Wednesday</b>	English Lessons	Multi-Activity or Chosen Programme	Oscars
<b>Thursday</b>	English Lessons	Llandudno with Great Orme Tramway	Around the World or Conversation Club
<b>Friday</b>	English Lessons	Multi-Activity or Chosen Programme	Talent Show
<b>Saturday</b>	Manchester with City of Manchester Stadium Tour		Leaving Disco
<b>Sunday</b>	Depart		

# Chichester University of Chichester

One of the best-preserved Georgian cities in the UK, Chichester is the affluent county town of West Sussex. With a cathedral dating back to the 11th century and some of the oldest buildings in Britain, Chichester has a rich history to explore. The city centre is pedestrianised and surrounded by the ancient city walls which helps keep it safe and secure for visiting students.

The university itself dates back to 1839. The campus on College Lane is set in spacious surroundings which include historic buildings and modern facilities. It is just a ten-minute walk from Chichester city centre.

University of Chichester



Students playing volleyball

*"Thanks so much for your hard work which gave our group such a fantastic summer program."*

**Agent, Chichester 2019**

# Why Choose This Centre:

- Amazing location near to the city centre and the south coast
- Excellent performing arts facilities
- Two full-day excursions to London and one to Brighton

**Dates for 2020:** Sunday 28th June – Sunday 9th August



Students at Buckingham Palace

## Facilities

- Outdoor sports fields
- Drama studios
- Dance studios
- Indoor gyms
- Indoor sports halls
- Indoor tennis courts

## Accommodation

- Single rooms
- Twin rooms
- Single en-suite rooms

## Age Ranges

- 11 - 14 year-olds
- 14 - 17 year-olds

## Transfers

- Gatwick - 1 hour
- Heathrow - 1 hour 10 minutes
- Stansted - 2 hours

## Programmes

- English Plus Multi-Activity
- English Plus Dance
- English Plus Drama
- English Plus Football
- English Plus Intensive English
- English Plus Media

## Excursions & Visits

- Chichester with Cathedral
- Portsmouth with Spinnaker Tower
- London with Palaces Walking Tour and London Eye
- London with Natural History Museum and Covent Garden
- Brighton with Royal Pavillion



## Sample Programme - Two Weeks

	Morning	Afternoon	Evening
<b>Monday</b>	English Test	Multi-Activity or Chosen Programme	Welcome Disco
<b>Tuesday</b>	English Lessons	Chichester with Chichester Cathedral	Quiz Night
<b>Wednesday</b>	English Lessons	Multi-Activity or Chosen Programme	Around the World
<b>Thursday</b>	London - Natural History Museum, Harrods, Hyde Park & Covent Garden		Mini Olympics
<b>Friday</b>	English Lessons	Multi-Activity or Chosen Programme	Paparazzi or Conversation Club
<b>Saturday</b>	English Lessons	Free Time, Activities or Optional Excursion	Film Night
<b>Sunday</b>	London Walking Tour - Buckingham Palace, Downing Street, Houses of Parliament, Big Ben & London Eye		Oscars
<b>Monday</b>	Multi-Activity or Chosen Programme	English Lessons	Karaoke or Conversation Club
<b>Tuesday</b>	Chichester with Town Trail	English Lessons	Casino Night
<b>Wednesday</b>	Multi-Activity or Chosen Programme	English Lessons	Red vs. Blue
<b>Thursday</b>	Portsmouth with Spinnaker Tower	English Lessons	Attractions
<b>Friday</b>	Multi-Activity or Chosen Programme	English Lessons	Talent Show
<b>Saturday</b>	Brighton Walking Tour with Royal Pavilion		Leaving Disco
<b>Sunday</b>	Depart		

# London King's College London

As the capital of the United Kingdom and one of the world's biggest cities, London needs no introduction. The past and the future meet in London to create one of the most exciting places famous for its multicultural vibe.

King's College London is situated in the heart of London and is one of the world's leading research and teaching universities (21st in QS World University Ranking 2016). The Denmark Hill campus is located in Zone 2, just 9 minutes from Victoria by train. The accommodation is single en-suite in a secure campus less than 10 minutes walk from the classrooms.



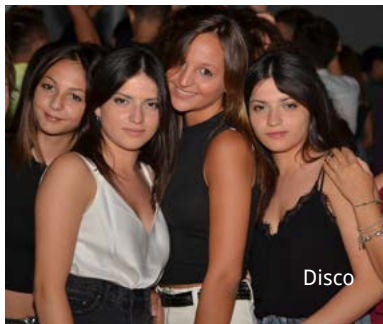
World-Class University



King's College accommodation



Students at Tower Bridge



Disco

*"Partnering with UKLC is one of the choices we didn't regret this summer. It offers high quality courses and accommodation for juniors. With an organized and careful management team, we got very positive feedback from students and parents."*

**Agent, King's College London 2018**



# Why Choose This Centre:

- Incredible central London location
- World class university venue
- Excursions every day

**Dates for 2020:** Monday 29th June - Monday 24th August



Students at National Portrait Gallery



Photography workshop

## Facilities

- Large lecture theatres
- Gymnasium
- Recreational and social areas

## Accommodation

- Single en-suite rooms

## Age Ranges

- 13 - 14 year-olds
- 14 - 17 year-olds
- 16 - 18 year-olds

## Transfers

- Heathrow - 1 hour
- Gatwick - 1 hour 10 minutes
- Stansted - 1 hour 15 minutes
- London City - 40 minutes

## Programmes

- English Plus Multi-Activity

## Excursions & Visits

- London Sightseeing - Big Ben, Houses of Parliament, Covent Garden, Buckingham Palace, Downing Street, Oxford Street, Trafalgar Square & London Eye
- London Museums - British Museum, National Portrait Gallery, Tate Modern, Imperial War Museum
- Cambridge with Fitzwilliam Museum
- Greenwich with National Maritime Museum



## Sample Programme - Two Weeks

	Morning	Afternoon	Evening
<b>Tuesday</b>	English Test	Tate Modern Gallery	Trashion Show
<b>Wednesday</b>	English Lessons	The British Museum & Covent Garden	Message Disco or Conversation Club
<b>Thursday</b>	English Lessons	The National Gallery	Film Night
<b>Friday</b>	English Lessons	Notting Hill & Portobello	Red vs. Blue
<b>Saturday</b>	English Lessons	The National Science Museum	Paparazzi or Conversation Club
<b>Sunday</b>	London - Buckingham Palace, Downing Street, Houses of Parliament, Big Ben & London Eye		Quiz Night
<b>Monday</b>	Knightsbridge, Hyde Park & Harrods	English Lessons	Oscars or Conversation Club
<b>Tuesday</b>	National Portrait Gallery & Leicester Square	English Lessons	Treasure Hunt
<b>Wednesday</b>	Natural History Museum	English Lessons	Karaoke or Conversation Club
<b>Thursday</b>	Greenwich with National Maritime Museum	English Lessons	Mini Olympics
<b>Friday</b>	Imperial War Museum	English Lessons	Film Night
<b>Saturday</b>	Cambridge Walking Tour with The Fitzwilliam Museum		Talent Show
<b>Sunday</b>	Camden Town, Market & Regent's Canal		Leaving Disco
<b>Monday</b>	Depart		

# Queen Mary University of London

London is truly one of the world's great cities. Every year it welcomes thousands of international students who want to visit Europe's most popular attractions.

Queen Mary University of London is one of the UK's leading research-focused higher education institutions and a member of the elite "Russell Group" of British universities. It is the perfect base from which juniors can explore the capital. A closed campus in Zone 2, Mile End is just 7 minutes from Bank Station in central London. The accommodation is single en-suite and all catering and classrooms are on-site.



Queens' Building



*"I would like to thank all the UKLC team which gets better with every year! Our teachers and students constantly give us the best feedback about your centres."*

**Agent, Multiple Centres 2018**

# Why Choose This Centre:

- Single en-suite accommodation in central London
- Excursions every day
- Closed campus location

**Dates for 2020:** Sunday 21st June – Sunday 23rd August

## Facilities

- Large lecture theatres
- Gymnasium
- Recreational and social areas

## Accommodation

- Single en-suite rooms

## Age Ranges

- 11 - 14 year-olds
- 14 - 17 year-olds

## Transfers

- Gatwick - 1 hour 25 minutes
- Heathrow - 1 hour 10 minutes
- Stansted - 45 minutes

## Programmes

- English Plus Multi-Activity

## Excursions & Visits

- London Sightseeing - Big Ben, Houses of Parliament, Covent Garden, Buckingham Palace, Downing Street, Oxford Street, Trafalgar Square & Madame Tussauds
- London Museums - British Museum, National Portrait Gallery, Tate Modern, Imperial War Museum
- Brighton Walking Tour with Royal Pavilion
- Greenwich with National Maritime Museum



Greenwich Excursion

Students

## Sample Programme - Two Weeks

	Morning	Afternoon	Evening
<b>Monday</b>	English Test	Tate Modern Gallery	Trashion Show
<b>Tuesday</b>	English Lessons	The British Museum & Covent Garden	Message Disco or Conversation Club
<b>Wednesday</b>	English Lessons	The National Gallery	Film Night
<b>Thursday</b>	English Lessons	Notting Hill & Portobello	Red vs. Blue
<b>Friday</b>	English Lessons	The National Science Museum	Paparazzi or Conversation Club
<b>Saturday</b>	London - Buckingham Palace, Downing Street, Houses of Parliament, Big Ben & Madame Tussauds		Quiz Night
<b>Sunday</b>	Brighton Walking Tour with Royal Pavillion		Oscars or Conversation Club
<b>Monday</b>	National Portrait Gallery & Leicester Square	English Lessons	Treasure Hunt
<b>Tuesday</b>	Natural History Museum	English Lessons	Karaoke or Conversation Club
<b>Wednesday</b>	Greenwich with National Maritime Museum	English Lessons	Mini Olympics
<b>Thursday</b>	Imperial War Museum	English Lessons	Film Night
<b>Friday</b>	Knightsbridge, Hyde Park & Harrods	English Lessons	Talent Show
<b>Saturday</b>	Camden Town, Market & Regent's Canal		Leaving Disco
<b>Sunday</b>	Depart		

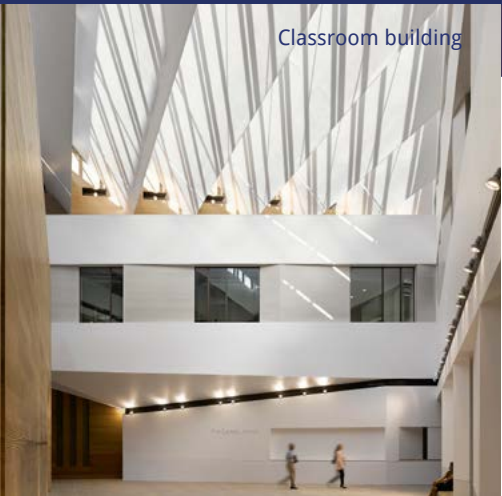
# Manchester Chetham's School

This city centre school is the largest specialist music school in the UK and is famous for being home to the oldest lending library in the world - Karl Marx and Friedrich Engels used to meet there often! The site offers a mix of modern facilities and accommodation set against a backdrop of medieval architecture. Its position in the middle of the vibrant city of Manchester means that students have the opportunity to explore a wealth of attractions on their doorstep.

Chetham's School of Music sits between the Cathedral, shopping centres and the popular Hard Rock Cafe. Famous for its industry, Manchester has been modernised over the past 20 years and has become one of Britain's most important commercial and financial centres. It has a thriving cultural scene, catering to its huge student population and Chetham's often hosts events during the biannual Manchester International Festival in July.



Chetham's School



Classroom building



Students at Man Utd

*"The location of the school is perfect for teens because it's in the centre of Manchester and they love the shopping area. The excursions to Liverpool, BBC and Blackpool were great!"*

**Group Leader, Manchester 2019**

# Why Choose This Centre:

- Safe closed campus in amazing city centre location
- Specialist Dance and Drama courses
- Excursions to York, Salford, Blackpool Pleasure Beach

**Dates for 2020:** Wednesday 8th July - Wednesday 5th August



Blackpool Pleasure Beach

Students

## Facilities

- Outdoor sports area
- Medieval performance hall
- Music rehearsal suites
- Dance studios

## Accommodation

- Single rooms
- Twin rooms
- Single en-suite rooms
- Twin en-suite rooms
- Multi-bedded en-suite rooms

## Age Ranges

- 11 - 14 year-olds
- 14 - 17 year-olds

## Transfers

- Manchester - 30 minutes
- Liverpool - 40 minutes
- Heathrow - 3 hours 5 minutes

## Programmes

- English Plus Multi-Activity
- English Plus Intensive English
- English Plus Dance
- English Plus Drama
- English Plus Media

## Excursions & Visits

- Salford with Imperial War Museum
- Blackpool with Pleasure Beach
- Manchester with Old Trafford Tour
- Manchester with Museum of Science and Industry
- York with York Minster
- Salford with BBC Headquarters



## Sample Programme - Two Weeks

	Morning	Afternoon	Evening
<b>Thursday</b>	English Test	Multi-Activity or Chosen Programme	Trashion Show
<b>Friday</b>	English Lessons	Salford with Imperial War Museum	Message Disco or Conversation Club
<b>Saturday</b>	English Lessons	Multi-Activity or Chosen Programme	Film Night
<b>Sunday</b>	Blackpool with Pleasure Beach Theme Park		Red vs. Blue
<b>Monday</b>	Multi-Activity or Chosen Programme	English Lessons	Paparazzi or Conversation Club
<b>Tuesday</b>	Manchester with Man Utd Old Trafford Tour	English Lessons	Quiz Night
<b>Wednesday</b>	Multi-Activity or Chosen Programme	English Lessons	Oscars or Conversation Club
<b>Thursday</b>	Museum of Science and Industry	English Lessons	Murder Mystery
<b>Friday</b>	Multi-Activity or Chosen Programme	English Lessons	Karaoke or Conversation Club
<b>Saturday</b>	York with York Minster & The Shambles		Mini Olympics
<b>Sunday</b>	Free Time, Activities or Optional Excursion		Film Night
<b>Monday</b>	English Lessons	Multi-Activity or Chosen Programme	Talent Show
<b>Tuesday</b>	English Lessons	BBC Headquarters	Leaving Disco
<b>Wednesday</b>	Depart		

# Nantwich Reaseheath College

Reaseheath College is an agricultural college set within 330 hectares of stunning parklands, woodlands and farms. It boasts its own equine centre, lake and an impressive mid-18th century main hall at the heart of the grounds.

Reaseheath is a 20-minute walk into the town of Nantwich and is approximately 40 minutes from Chester. It is only one hour from Manchester and Liverpool Airports and just over two and a half hours to London Heathrow.



Nantwich town centre



*"It's a beautiful place absorbed in nature – a fantastic place!"*

**Student, Nantwich 2019**

# Why Choose This Centre:

- Beautiful campus location on edge of historic English town
- Two excursions to Chester, plus Stratford upon Avon and Liverpool
- High quality single en-suite accommodation

**Dates for 2020:** Friday 3rd July - Friday 31st July



Shakespeare's House, Stratford Upon Avon



Students on excursion

## Facilities

- Large sports hall
- Rugby pitches
- Football pitches
- Astro turf
- Cricket pitches
- Reaseheath zoo

## Accommodation

- Single en-suite rooms
- Single rooms

## Age Ranges

- 8 - 11 year-olds
- 11 - 14 year-olds
- 14 - 17 year-olds

## Transfers

- Manchester - 45 minutes
- Liverpool - 1 hour 10 minutes
- Heathrow - 2 hours 45 minutes

## Programmes

- English Plus Multi-Activity
- English Plus Intensive English
- English Plus Dance
- English Plus Drama
- English Plus Media

## Excursions & Visits

- Chester with Roman Tour
- Chester with Boat Trip
- Nantwich with Nantwich Museum
- Liverpool with Beatles Story
- Stratford Upon-Avon with Shakespeare's House
- Shrewsbury with Castle Museum



## Sample Programme - Two Weeks

	Morning	Afternoon	Evening
<b>Saturday</b>	English Test	Multi-Activity or Chosen Programme	Film Night
<b>Sunday</b>	Liverpool with Beatles Museum		Oscars
<b>Monday</b>	English Lessons	Nantwich Town Orientation	Message Disco or Conversation Club
<b>Tuesday</b>	English Lessons	Multi-Activity or Chosen Programme	Trashion Show
<b>Wednesday</b>	English Lessons	Chester with Roman Tour	Paparazzi
<b>Thursday</b>	English Lessons	Multi-Activity or Chosen Programme	Attractions or Conversation Club
<b>Friday</b>	English Lessons	Multi-Activity or Chosen Programme	Quiz Night
<b>Saturday</b>	Stratford Upon Avon with Shakespeare's House		Mini Olympics or Conversation Club
<b>Sunday</b>	Free Time, Activities or Optional Excursion		Murder Mystery
<b>Monday</b>	English Lessons	Multi-Activity or Chosen Programme	Red vs Blue
<b>Tuesday</b>	English Lessons	Chester with Boat Trip	Karaoke
<b>Wednesday</b>	English Lessons	Multi-Activity or Chosen Programme	Games Night or Conversation Club
<b>Thursday</b>	English Lessons	Shrewsbury with Castle Museum	Leaving Disco
<b>Friday</b>	Depart		

# Reading Queen Anne's School

Reading is a large town in the Royal County of Berkshire. It has been important since medieval times, and the ruins of Reading Abbey, a monastery with strong royal connections, can still be visited. The town itself straddles the River Thames and benefits greatly from tourism due to its close proximity to the capital city and its vibrant atmosphere.

Queen Anne's School has a history which dates back to 1698. It is situated in a lovely closed campus with 35 acres of extensive landscaped grounds just north of the River Thames. The grounds combine traditional Victorian architecture with new and contemporary buildings to provide cutting-edge facilities, all of which are just a one-mile walk from the centre of Reading.

Full Day  
Excursions to  
London (x 2)  
& Oxford



Queen Anne's School



Evening activities

*"It was really a fantastic time we spent at UKLC Queen Anne's School. Thank you for UKLC staff's professionalism and for your hospitality. We are planning next year now."*

**Agent, Reading 2018**



# Why Choose This Centre:

- Classic boarding school with easy access to London and its airports
- Excellent sports and performing arts facilities
- Two full day excursions to London and one to Oxford

**Dates for 2020:** Sunday 12th July - Sunday 9th August



Students

UKLC staff

## Facilities

- Outdoor sports fields
- Drama studio
- Dance studios
- Indoor swimming pool
- Indoor sports hall
- Tennis courts
- Netball courts

## Accommodation

- Single rooms
- Twin rooms
- Multi-bed (3-5) rooms
- Single en-suite rooms
- Twin en-suite rooms

## Age Ranges

- 8 - 11 year-olds
- 11 - 14 year-olds
- 14 - 17 year-olds

## Transfers

- Gatwick - 1 hour 15 minutes
- Heathrow - 40 minutes
- Stansted - 1 hour 35 minutes

## Programmes

- English Plus Multi-Activity
- English Plus Dance
- English Plus Drama
- English Plus Intensive English
- English Plus Life Skills



## Excursions & Visits

- London Walking Tour including Buckingham Palace, Downing Street, Houses of Parliament & trip on the London Eye
- Oxford with Oxford University Christ Church College Tour
- London with Greenwich, National Maritime Museum, Cutty Sark and the Royal Observatory
- Windsor with Windsor Castle

## Sample Programme - Two Weeks

	Morning	Afternoon	Evening
<b>Monday</b>	English Test	Multi-Activity or Chosen Programme	Murder Mystery
<b>Tuesday</b>	English Lessons	<b>Caversham Orientation</b>	Casino Night or Conversation Club
<b>Wednesday</b>	English Lessons	Multi-Activity or Chosen Programme	Trashion Show
<b>Thursday</b>	<b>London Walking Tour - Buckingham Palace, Downing Street, Houses of Parliament &amp; Trip on London Eye</b>		Disco
<b>Friday</b>	English Lessons	Multi-Activity or Chosen Programme	Red vs. Blue
<b>Saturday</b>	English Lessons	Free Time, Activities or Optional Excursion	
<b>Sunday</b>	<b>Oxford with Oxford University Christ Church College Tour</b>		Film Night
<b>Monday</b>	English Lessons	Multi-Activity or Chosen Programme	Karaoke or Conversation Club
<b>Tuesday</b>	English Lessons	<b>Reading with Reading Museum</b>	Paparazzi
<b>Wednesday</b>	English Lessons	Multi-Activity or Chosen Programme	Mini Olympics
<b>Thursday</b>	English Lessons	<b>Windsor with Windsor Castle</b>	Oscars
<b>Friday</b>	English Lessons	Multi-Activity or Chosen Programme	Talent Show
<b>Saturday</b>	<b>London with Greenwich, National Maritime Museum &amp; Cutty Sark and the Royal Observatory</b>		Leaving Disco
<b>Sunday</b>	Depart		

# York Bootham School

Bootham School is a traditional English private school in the centre of York. It sits just outside the city walls and the spires of the famous York Minster can be seen from the grounds. The school boasts excellent modern teaching and sports facilities.

York is undoubtedly one of the most beautiful cities in the UK. It is to be found 25 miles to the east of Leeds and 40 minutes from the east coast of England. The city has a proud Roman and Viking heritage which is still in evidence today.



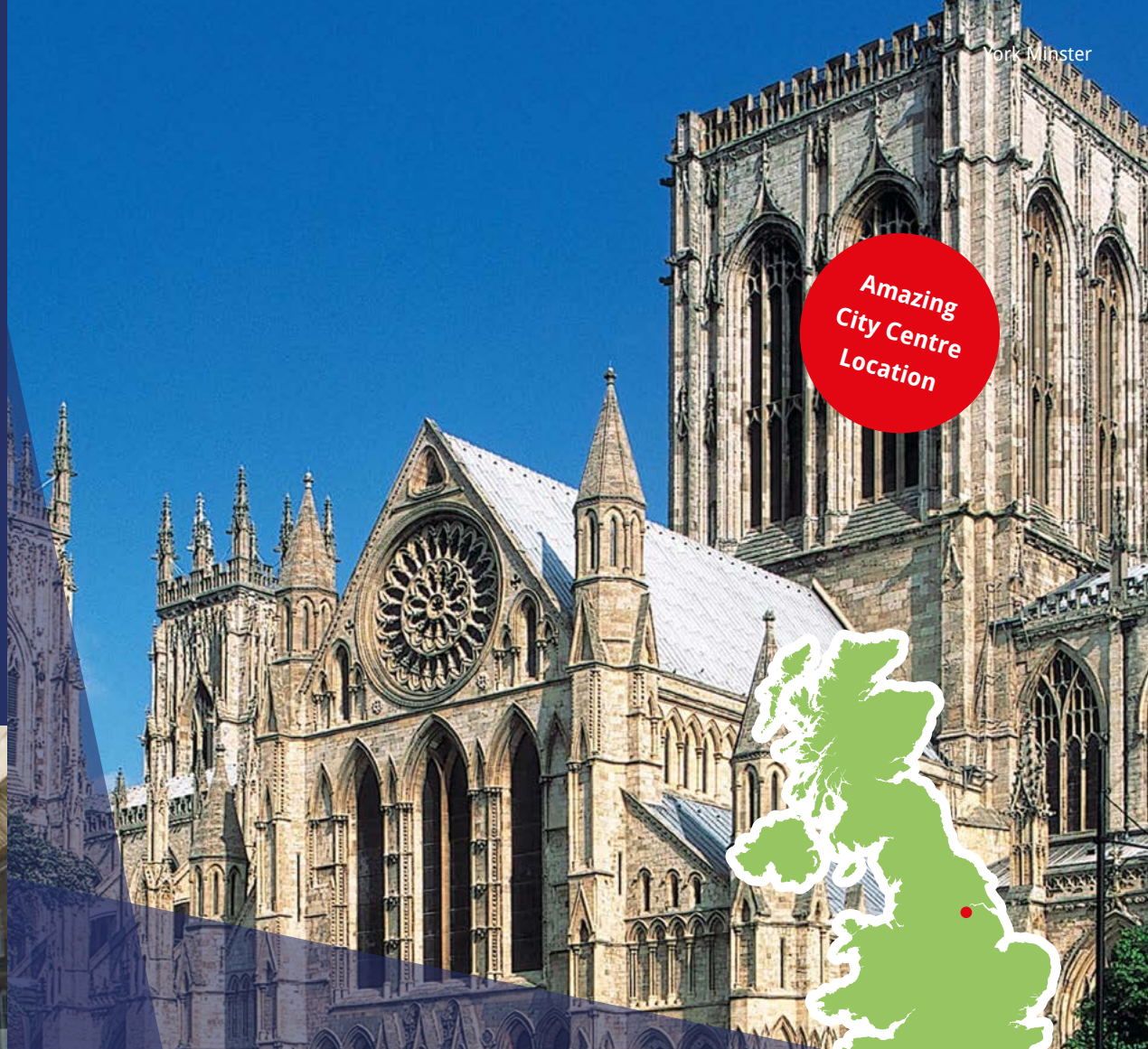
Bootham School



Minster from Bootham School



Bark Endeavour



York Minster

Amazing  
City Centre  
Location



Students swimming

*"Our most experienced group leader is ecstatic about the friendliness of staff. She said it has never been so smooth and organised but not rushed."*

**Agent, York Bootham 2019**

# Why Choose This Centre:

- Amazing city centre location, a 2-minute walk from York Minster
- Excellent sports facilities
- Excursions to Whitby, Castle Howard, Leeds & Manchester



York Dungeons



Students outside Bootham School

**Dates for 2020:** Monday 6th July - Monday 17th August

## Sample Programme - Two Weeks

### Facilities

- Large sports hall
- Tennis courts
- Heated indoor swimming pool
- Large sports field
- Basketball court

### Accommodation

- Single rooms
- Twin rooms
- Multi-bedded rooms
- Twin en-suite rooms

### Age Ranges

- 8 - 11 year-olds
- 11 - 14 year-olds
- 14 - 17 year-olds

### Transfers

- Manchester - 1 hour 40 minutes
- Leeds Bradford - 55 minutes
- Heathrow - 3 hours 45 minutes

### Programmes

- English Plus Multi-Activity
- English Plus Dance
- English Plus Drama
- English Plus Football
- English Plus Intensive English
- English Plus Life Skills

### Excursions & Visits

- York with York Dungeons
- Leeds with Leeds City Museum
- Whitby with Bark Endeavour
- York with Railway Museum
- Castle Howard
- Manchester with Manchester Utd Old Trafford Stadium Tour



	Morning	Afternoon	Evening
<b>Tuesday</b>	English Test	Multi-Activity or Chosen Programme	Message Disco
<b>Wednesday</b>	English Lessons	York with York Dungeons	Around the World or Conversation Club
<b>Thursday</b>	English Lessons	Multi-Activity or Chosen Programme	Mini Olympics
<b>Friday</b>	English Lessons	Leeds with Leeds City Museum	Horrible History or Conversation Club
<b>Saturday</b>	English Lessons	Multi-Activity or Chosen Programme	Karaoke
<b>Sunday</b>	Whitby with Bark Endeavour		Film Night
<b>Monday</b>	Free Time, Activities or Optional Excursion		Campus Monopoly
<b>Tuesday</b>	English Lessons	Multi-Activity or Chosen Programme	Quiz Night or Conversation Club
<b>Wednesday</b>	English Lessons	York with National Railway Museum	Karaoke
<b>Thursday</b>	English Lessons	Multi-Activity or Chosen Programme	Paparazzi or Conversation Club
<b>Friday</b>	English Lessons	Castle Howard	Talent Show
<b>Saturday</b>	English Lessons	Multi-Activity or Chosen Programme	Film Night
<b>Sunday</b>	Manchester with Old Trafford Tour		Leaving Disco
<b>Monday</b>	Depart		

# York

## St Peter's School

St Peter's School is a historic and traditional English private school in the centre of York. It has extensive grounds which run down to the River Ouse and boasts fantastic sports facilities. Founded by St Paulinus of York in AD 627, it is the third oldest school in the whole of the UK!

York is one of the most popular cities in the UK. It is famed for its incredible history and receives 7 million tourists per year! It has been important for at least 2,000 years - as a Roman, Viking and Medieval Anglo Saxon city - and that's one of the reasons why the Tour de France started here in 2014. You can still see yellow bikes on display across the city!



St Peter's School



Students in York

*"Teachers who came back from your schools are soooooo happy so they want your schools again for the next year!"*

**Agent, St Peter's School (and others) 2018**

# Why Choose This Centre:

- Excellent sports facilities
- Historic British boarding school
- Extensive landscaped campus a 10-minute walk from York Minster



Students in York



Swimming

**Dates for 2020:** Monday 6th July - Monday 3rd August

## Facilities

- Large sports hall
- Tennis courts
- Heated indoor swimming pool
- Large sports field
- Basketball court

## Accommodation

- Single rooms
- Twin rooms
- Multi-bedded rooms

## Age Ranges

- 8 - 11 year-olds
- 11 - 14 year-olds
- 14 - 17 year-olds

## Transfers

- Manchester - 1 hour 40 minutes
- Leeds Bradford - 55 minutes
- Heathrow - 3 hours 45 minutes

## Programmes

- English Plus Multi-Activity
- English Plus Dance
- English Plus Drama
- English Plus Football
- English Plus Intensive English
- English Plus Life Skills

## Excursions & Visits

- York with York Dungeon
- Leeds with Leeds City Museum
- Whitby with Bark Endeavour
- York with Railway Museum
- Castle Howard
- Manchester with Manchester Utd Old Trafford Stadium Tour



## Sample Programme - Two Weeks

	Morning	Afternoon	Evening
<b>Tuesday</b>	English Test	Multi-Activity or Chosen Programme	Message Disco
<b>Wednesday</b>	English Lessons	York with York Dungeons	Around the World or Conversation Club
<b>Thursday</b>	English Lessons	Multi-Activity or Chosen Programme	Mini Olympics
<b>Friday</b>	English Lessons	Leeds with Leeds City Museum	Ghost Walk or Conversation Club
<b>Saturday</b>	English Lessons	Multi-Activity or Chosen Programme	Karaoke
<b>Sunday</b>	Whitby with Bark Endeavour		Film Night
<b>Monday</b>	Free Time, Activities or Optional Excursion		Campus Monopoly
<b>Tuesday</b>	English Lessons	Multi-Activity or Chosen Programme	Quiz Night or Conversation Club
<b>Wednesday</b>	English Lessons	York with National Railway Museum	Karaoke
<b>Thursday</b>	English Lessons	Multi-Activity or Chosen Programme	Paparazzi or Conversation Club
<b>Friday</b>	English Lessons	Castle Howard	Talent Show
<b>Saturday</b>	English Lessons	Multi-Activity or Chosen Programme	Film Night
<b>Sunday</b>	Manchester with Old Trafford Tour		Leaving Disco
<b>Monday</b>	Depart		

# Summer Programmes for Individual Juniors

UKLC are pleased to offer individual juniors, travelling without a group leader, the chance to join our programmes at three of our centres in York, Reading and Bristol. They will be allocated a UKLC member of staff to act as their Group Leader and point of reference at all times.

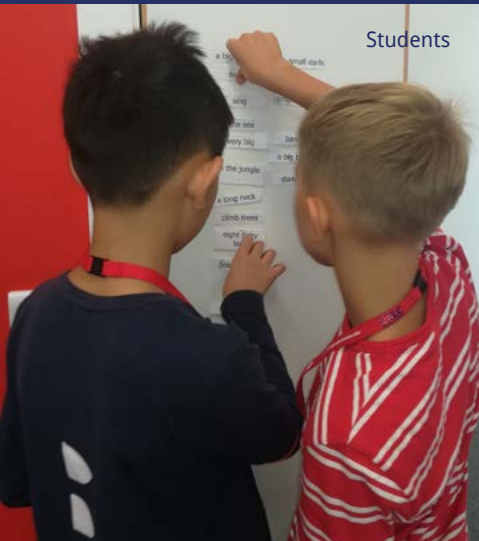
Accommodation at all three schools is in shared rooms with students of different nationalities where possible.

UKLC staff are available 24 hours a day and there is a 24-hour emergency number for partner agents, parents and students.

More information on how we safeguard students can be found in the 'Welfare' section on page 32.



English Lessons



Students



Students at Beatles Story

*"Things are going really well, the staff's welcome was absolutely outstanding."*

**Group Leader, Chester 2019**

## Bristol Badminton School

**Dates for 2020:** Sunday 5th July –  
Sunday 16th August

**Age Range :** 11-17 year-olds

Badminton School is set in stunning walled grounds in Westbury-on-Trym on the outskirts of Bristol. It is a beautiful mixture of old and new buildings surrounded by glorious gardens. The accommodation is bright and airy rooms with comfortable common rooms – many of them with fantastic views over Bristol.

### Excursions & Visits

- Caldicot Castle
- Oxford with Punting on the River Cherwell
- Bath with Roman Baths
- Cheddar Gorge
- Bristol with SS Great Britain

Centre description and sample programme on page 8-9

## Reading Queen Anne's School

**Dates for 2020:** Sunday 12th July –  
Sunday 9th August

**Age Range :** 11-17 year-olds

Queen Anne's School is a well-known English boarding school situated near the River Thames just 25 miles from Heathrow Airport. It has a history dating back to 1698!

### Excursions & Visits

- London Walking Tour including Buckingham Palace, Downing Street, Houses of Parliament & a trip on the London Eye
- Oxford with Christ College Tour & The Pitt Rivers Museum
- London with Greenwich, National Maritime Museum & Natural History Museum
- Windsor with Boat Tour

Centre description and sample programme on page 24-25

## York Bootham School & St Peter's School

**Dates for 2020:** Monday 6th July –  
Monday 3rd August

**Age Range :** 11-17 year-olds

Bootham and St Peter's Schools are both traditional English private boarding schools in the centre of York. Both are beautiful, closed, urban campuses a 7-minute and 10-minute walk from the city centre.

### Excursions & Visits

- York with York Dungeons
- Leeds with Leeds City Museum
- Whitby with Bark Endeavour
- York with Railway Museum
- Castle Howard
- Manchester with Manchester Utd Old Trafford Stadium Tour

Centre description and sample programme on page 26-29

## Nantwich Reaseheath College

**Dates for 2020:** Friday 3rd July –  
Friday 31st July

**Age Range :** 11-17 year-olds

Reaseheath College is set within 330 hectares of stunning parklands, woodlands and farms. It boasts its own lake and an impressive mid-18th century main hall at the heart of the grounds and is just 40 minutes from the historic city of Chester

### Excursions & Visits

- Chester with Roman Tour
- Chester with Boat Trip
- Nantwich with Nantwich Museum
- Liverpool with Beatles Story
- Stratford Upon-Avon with Shakespeare's House
- Shrewsbury with Castle Museum

Centre description and sample programme on page 22-23



# Academic Tuition

We know how important it is for each individual student to find their own path in language learning. We use a wide range of methods to engage and stimulate our students. This is why we have created a curriculum based on the students' age, level, and needs, structured into three different programmes:

- **FUN (Ages 8-11):** Highly engaging lessons that offer a wide range of material and activities specific for our young learners. It makes games into lessons and lessons into games.
- **CONNECTION (Ages 11-14):** Very dynamic lessons that include a variety of topics and media, especially designed to reflect the quick-paced interactive world our younger students are growing up in. Available in levels A1-C1.
- **ACTION (Ages 14-17):** Lessons specifically designed to engage our older students through more abstract tasks, topics and contemporary issues. Available in levels A1-C1.

The CONNECTION and ACTION programmes consist of three different lessons a day:

1. **TBL (Task-Based Learning):** During these lessons students are encouraged to complete a task. Language is therefore acquired through the task as it emerges naturally as the result of the students' communicative needs.
2. **S&S (Skills and Systems):** These lessons aim at empowering our students' linguistic awareness and capabilities by working on all language skills (reading, writing, listening, speaking) and systems (grammar, phonology, lexis, discourse), as well as using materials relevant to exam preparation (KET, PET, FCE, CAE, TOEFL, IELTS, GESE).
3. **CLIL (Content and Language Integrated Learning):** These lessons merge CLIL and British Culture. Students learn about art, literature, and science, or about the history and the geography of the UK, while activating their linguistic knowledge.



*"We have now found a team in UKLC who does everything at the level of quality we always look for!"*

**Agent, Multiple Centres 2019**



## Placement Tests

We offer classes at four levels from Elementary to Upper Intermediate. Students take a placement test on their first day of classes to ensure they are placed at the correct level. We also offer a specific test for students with special needs.

## Examinations

We offer the option of taking the Trinity College London Graded Examination in Spoken English (GESE) on site for courses of 10 days or longer.\*

Students are taught in class sizes up to 16.

\*Minimum of 10 students across all groups required to source an examiner.



## Sample Academic Programme - Two Weeks\*

### Week 1 English Lessons

	09:00 - 10:00	10:00 - 10:15	10:15 - 11:15	11:15 - 11:30	11:30 - 12:30
<b>Monday</b>	Welcome Talk; Placement Test: Written; Placement Test: Oral				
<b>Tuesday</b>	Skills & Systems	Break	CLIL British Culture	Break	Task-Based Learning
<b>Wednesday</b>	CLIL British Culture	Break	Skills & Systems	Break	Task-Based Learning
<b>Thursday</b>	Skills & Systems	Break	Task-Based Learning	Break	CLIL British Culture
<b>Friday</b>	Task-Based Learning	Break	Skills & Systems	Break	CLIL British Culture

### Week 2 English Lessons

	09:00 - 10:00	10:00 - 10:15	10:15 - 11:15	11:15 - 11:30	11:30 - 12:30
<b>Monday</b>	Task-Based Learning	Break	Skills & Systems	Break	CLIL British Culture
<b>Tuesday</b>	Skills & Systems	Break	CLIL British Culture	Break	Task-Based Learning
<b>Wednesday</b>	CLIL British Culture	Break	Skills & Systems	Break	Task-Based Learning
<b>Thursday</b>	Skills & Systems	Break	Task-Based Learning	Break	CLIL British Culture
<b>Friday</b>	Task-Based Learning	Break	Skills & Systems	Break	CLIL British Culture

\*Timings are indicative and may vary at different centres

# Welfare

As specialists in programmes for young people aged 8-17, the safeguarding of children is fundamental to the way UKLC views and ensures the wellbeing of its students.

We are recognised for our strengths in this area having developed robust systems and processes for managing the welfare of children in our centres.



London excursion



Greenwich from the Royal Observatory



Students



Wristbands with emergency number



Students

*"I never felt alone and it is important especially when you travel with students on your own."*

**Group Leader, Manchester 2017**

## Steps we take to ensure the welfare of students;

- Our “Operations and Safeguarding Handbook” is distributed to all staff. It is available to agents in the Agent Login Area on the website
- All staff undergo appropriate background and safeguarding checks
- A dedicated Safeguarding and Welfare Coordinator at every site
- All students are given an induction lesson highlighting the rules for that centre
- All group leaders attend an induction meeting when they arrive which details their responsibilities towards their group but also as an adult at a residential centre
- We work with group leaders to ensure their students have a safe and enjoyable stay, taking full responsibility for students when they are in lessons and on scheduled activities
- We assist group leaders to ensure students’ safety and care outside of scheduled activities and during excursions
- UKLC staff are available 24 hours a day for any issue that may arise
- There is a 24-hour emergency number for partner agents, parents and students
- All students get a UKLC wristband and lanyard to be worn at all times
- Individuals are allocated to a member of UKLC staff who will act as their group leader and point of reference at all times

More detailed information about each of our policies and procedures with regards to safeguarding is available on our website Agent Login Area and our downloadable handbooks.

For more information visit [www.uklanguagecourses.com](http://www.uklanguagecourses.com)



Students on excursion



Students in York

***“To educate, inspire and to enrich the lives of  
young people from all over the world through English  
Language, Sports, and British Culture.”***



**UKLC - UK Language Courses, Suite 1d, Rossett Business Village, Rossett, Nr Chester, LL12 0AY, United Kingdom**

Telephone: 0044 1244 577 995 • Website: [www.uklanguagecourses.com](http://www.uklanguagecourses.com) • Email: [info@uklc.org](mailto:info@uklc.org)