



King's College, London

CENTRE HANDBOOK 2022

UK Language Courses

Accredited by the
 **BRITISH
COUNCIL**
for the teaching
of English in the UK

ALTO Association of
Language Travel
Organisations



Educate, Inspire, Enrich

ENGLISH**UK** 
member

**YOUNG
LEARNERS**
ENGLISH**UK**

CENTRE HANDBOOK 2022

Thank you very much for your interest in our King's College, London centre. We hope you find everything you need in the following pages but if you have any questions or specific requests then please get in touch with us at Head Office on +44 (0)1244 577995.

We look forward to a successful summer 2022 at King's College London.



LONDON, KING'S COLLEGE

SUMMARY



AMAZING
CITY CENTRE
LOCATION



LONDON
EXCURSIONS



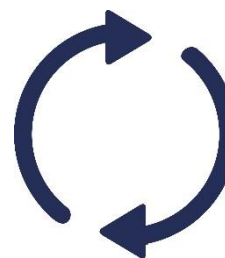
ENSUITE
ACCOMMODATION



COLLEGE OR
UNIVERSITY



EXCITING
EXCURSIONS



SHORT
TRANSFERS



Accredited by the
BRITISH COUNCIL
 for the teaching
 of English in the UK

ALTO Association of
 Language Travel
 Organisations



Educate, Inspire, Enrich

ENGLISHUK
 member

**YOUNG
 LEARNERS**
ENGLISHUK

CENTRE DESCRIPTION

King's College is a public research university located in the heart of London. It is an open urban university campus.

It is an open site with high security. With CCTV on campus, the residences have swipe card entry systems for access. There are residence officers 8am-6pm and overnight security 6pm-8am.

There is a total of 3 houses with single ensuite accommodation 10 minutes' walk from the classrooms. In each house, there is a kitchen on every floor that can be accessed and common areas on campus that can be used.

In this centre, we accept students travelling in groups from 13- 17 years old.



LOCATION

Weston Education Centre, Cutcombe Road, London SE5 9RJ

Telephone Number - +44(0)20 78365454

Population - 8.6 Million

King's College Waterloo campus is situated in zone 2, just 5 minutes' walk to Waterloo station.

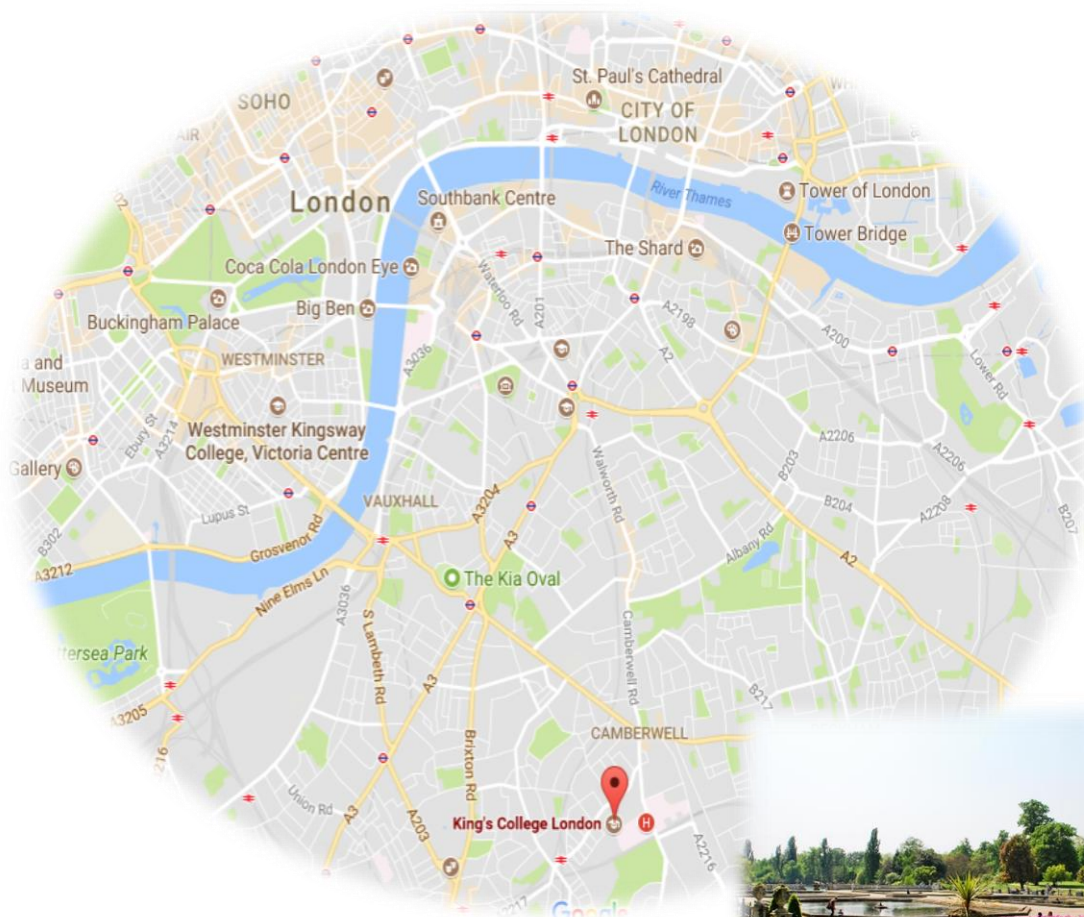
Airport transfers:

London Gatwick: 1 hour

London Heathrow: 1 hour 10 minutes

London Stansted: 1 hour 10 minutes

London City: 40 minutes



London, England's capital, set on the River Thames, is a 21st-Century city with history stretching back to Roman times.

LOCAL AMENITIES

Post Office

Address: Blackfriars Post Office, Columbo House, 25 Blackfriars Rd, South Bank, London, SE1 8NN (0.4 miles / 8 minutes' walk)

Supermarket

Sainsbury Local

Address: 101 Waterloo Rd, Bishop's, London, SE1 8UL (0.2 miles / 5 minutes' walk)

ATM

Waterloo Station

Address: Waterloo Station, Bishops', London, DE1 8BL (0.2 miles / 6 minutes' walk)

Chemist

Waterloo Station – Boots

Address: Waterloo Station, Bishops', London, DE1 8BL (0.2 miles / 6 minutes' walk)

Nearest Hospital / Doctors -

St Thomas Hospital

Address: St Thomas Hospital, Lambeth Palace Rd, Bishops', London SE1 7PB (0.3 miles / 7 minutes' walk)

Telephone: 020 7188 7188

N.B. - If a student is ill and requires a doctor, a group leader and a UKLC staff member will take the student to the Kings College Hospital. The student will be required to fill out a temporary patient form and will be seen on the same day.

Nearest Dentist

South Bank Dentist

Address: Riverside Building, Westminster Bridge, Bishops' London, SE1 7PB (0.3 miles / 7 minutes' walk)

Telephone: 020 7183 3558

Bus Stops – Waterloo Station – Tension way (Stop K) (285 ft / 1-minute walk)

Train Stations -

Waterloo Station

Address: Waterloo Station, Bishops', London, DE1 8BL (0.2 miles / 6 minutes' walk)

Taxi Companies

Addison Lee: 020 7407 9000

Camberwell Cars: 020 7703 4461

Coffee Shops

Costa Coffee

Costa Coffee serves a variety of light bites and main meals with relaxed surroundings and high-quality coffee.

Address: BFI IMAX, Charlie Chaplin Walk, London, SE1 8XR

Walking distance from Waterloo Campus: 0.3 miles (6 minutes' walk)

Beany Green

A wide selection of breakfasts, lunches and snacks, House serves tip top coffee and tea, smoothies and fresh juices as well as locally homemade cakes.

Address: Belvedere Rd, Bishops', London, SE1 8XX

Walking distance from Waterloo Campus: 0.3 miles (6 minutes' walk)

Local Restaurants

Brasserie Blanc

Upscale chain brasserie serving a classically French menu devised by celebrity chef Raymond Blanc.

Address: 9 Belvedere Rd, Bishops', London, SE1 8YL

Walking distance from Waterloo Campus: 0.4 miles (6 minutes' walk)

The Archduke

Steak restaurant and wine bar under railway arches with free jazz on Fridays and Saturdays.

Address: 135 Concert Hall Approach, Bishops', London, SE1 8XU

Walking distance from Waterloo Campus: 0.6 miles (11 minutes' walk)

Azzurro

Relaxed restaurant serving Italian staples under the soaring exposed brickwork of a railway arch.

Address: 1 Sutton Walk, Bishops', London, SE1 7ND

Walking distance from Waterloo Campus: 0.8 miles (18 minutes' walk)

ACCOMMODATION

The University has 3 residential houses all with single ensuite rooms. Each house has a kitchen on every floor that can be accessed. The houses are called Oak, Maple and Beech.

All bedding and towels are provided.

Room Allocation

We divide the students up according to their age, sex and group where possible. We take into consideration any specific requests, e.g. friends who want to share. Group leaders will stay in the same house as their students. Room allocation is normally done on arrival. If you would like any further information on this, please contact us.

HOUSEKEEPING

Bedding and towels are changed once every 4 days. Bedrooms and bathrooms are deep cleaned once a week. Rooms are wiped down and bins emptied daily Monday-Friday.

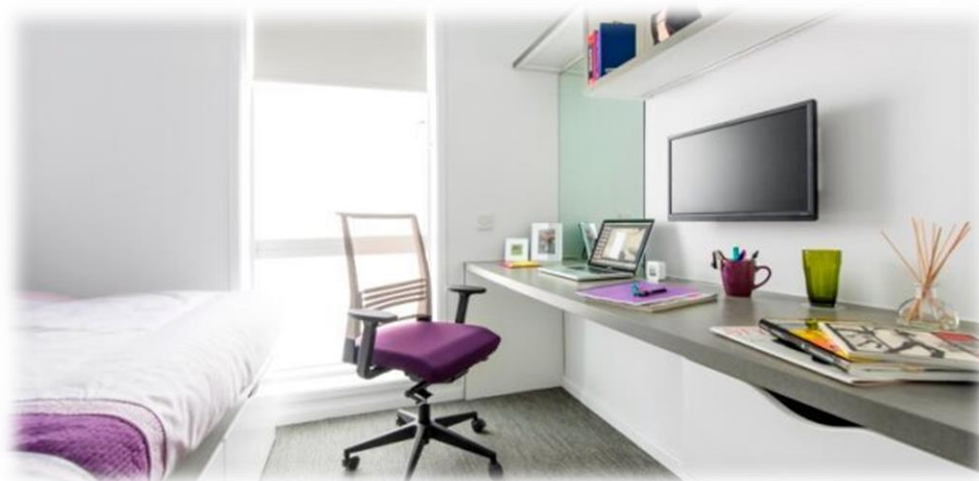
There are washing machine and tumble dry facilities located in Platanes House that are card operated. It costs £2.00 for a laundry card, £2.50 per wash and £1 per dry. The students must provide their own washing powder.

Key Loss

All students and group leaders will receive their own key card for the duration of their stay. If any key is lost or not returned before departure, there will be a £20 fee for a replacement.

Deposits

We will ask each student for a deposit of €25/£25 on arrival. We will check their rooms before they arrive and before they leave, returning the money if everything is in order. If there is damage to the houses and nobody admits fault, we will ask everyone in the house to share the cost.



MEALS

When the students are on campus, they will eat their meals in the dining hall on site. When they are out on full day excursions, they will be provided with packed lunches.

There is the option of having a cooked breakfast once a week.

*Meal times:

Breakfast: 08:00 - 09:00

Lunch: 13:00 - 15:00

Dinner: 18:30 - 20:30

If we are aware in advance, we can advise the catering staff of any dietary requirements or allergies and the canteen staff can cater to these.

*Meal times are subject to change

King's College Sample Menu

	Monday	Tuesday	Wednesday	Thursday	Friday	Saturday	Sunday
Breakfast	Croissants Toast, Cereal, Yoghurt Butter and Jams	Croissants Toast, Cereal, Yoghurt Butter and Jams	Croissants Toast, Cereal, Yoghurt Butter and Jams	Croissants Toast, Cereal, Yoghurt Butter and Jams	Croissants Toast, Cereal, Yoghurt Butter and Jams	Croissants Toast, Cereal, Yoghurt Butter and Jams	Croissants Toast, Cereal, Yoghurt Butter and Jams Full English Breakfast
Lunch *(V) Vegetarian option available	Beef Lasagne Vegetable Lasagne (v) New Potatoes A Selection of Fresh Vegetables Jacket Potatoes with a variety of Fillings Salad Selection Fresh Fruit Soup of the Day Bread Roll with Olive Oil & Butter Pasta & Sauce of the Day Grilled Cajun Chicken Baguette Hummus & Roasted Vegetable Baguette (v)	Coq au Vin Risotto with Charred Leeks (v) Rice A Selection of Fresh Vegetables Jacket Potatoes with a variety of Fillings Salad Selection Fresh Fruit Soup of the Day Bread Roll with Olive Oil & Butter Pasta & Sauce of the Day Chicken or Ham & Margarita or Mediterranean Veg Pizza (v)	Steak & Guinness Sausages Quorn Sausages (v) Mash Potatoes & Gravy A Selection of Fresh Vegetables Jacket Potatoes with a variety of Fillings Salad Selection Fresh Fruit Soup of the Day Bread Roll with Olive Oil & Butter Pasta & Sauce of the Day Tuna & Sweetcorn Baguette Feta Cheese Baguette (v)	Beef Stir Fry Vegetable Chow Mein (v) Noodles A Selection of Fresh Vegetables Jacket Potatoes with a variety of Fillings Salad Selection Fresh Fruit Soup of the Day Bread Roll with Olive Oil & Butter Pasta & Sauce of the Day BBQ Chicken or Meatball Panini Brie & Cranberry or Roasted Vegetable Panini (v)	Battered or Grilled Haddock with Fennel Mushroom Carbonara (v) A Selection of Fresh Vegetables Jacket Potatoes with a variety of Fillings Salad Selection Fresh Fruit Soup of the Day Bread Roll with Olive Oil & Butter Pasta & Sauce of the Day Southern Fried Chicken Pieces & fries Pepper & Bean Burritos (v)	Sweet and Sour Chicken Chilli & Pepper Frittata (v) A Selection of Fresh Vegetables Jacket Potatoes with a variety of Fillings Salad Selection Fresh Fruit Soup of the Day Bread Roll with Olive Oil & Butter Pasta & Sauce of the Day BLT Baguette or Beef Baguette Spiced Falafel and Spinach Wrap (v)	Cheddar Roast (v) Roast Potatoes A Selection of Fresh Vegetables Jacket Potatoes with a variety of Fillings Salad Selection Fresh Fruit Soup of the Day Bread Roll with Olive Oil & Butter Pasta & Sauce of the Day Tuna or Cheese & Bacon Panini Cheese & Tomato or Soft Cheese & Pepper Panini (v)
Dinner *(V) Vegetarian option available	Chilli Baked Bassa Polenta & Lentil Cakes (v) Quarter Pounder Beefburger Spicy Bean Burger (v) Fries, Lemon Cous Cous A Selection of Fresh Vegetables Salad Selection Soup of the Day Bread Roll with Olive Oil & Butter Pasta & Sauce of the Day	Beef & Mushroom Pie Butternut Squash Pie (v) Chicken Nuggets Vegetable Spring Rolls (v) Mash Potato, Rice A Selection of Fresh Vegetables Salad Selection Soup of the Day Bread Roll with Olive Oil & Butter Pasta & Sauce of the Day	Chicken Tagine Bean and Squash Tagine (v) Fish Goujons Vegetable Nuggets (v) Fries, Cous Cous A Selection of Fresh Vegetables Salad Selection Soup of the Day Bread Roll with Olive Oil & Butter Pasta & Sauce of the Day	Roast Chicken Tortellini Ricotta (v) Hot Dogs Vegetarian Hot Dogs (v) Roast Potatoes, Tomato Pasta A Selection of Fresh Vegetables Salad Selection Soup of the Day Bread Roll with Olive Oil & Butter Pasta & Sauce of the Day	Chilli Con Carne Vegetarian Sausage Jambalaya (v) Pasties Cheese and Onion Pasties (v) Fries, Rice A Selection of Fresh Vegetables Salad Selection Soup of the Day Bread Roll with Olive Oil & Butter Pasta & Sauce of the Day	Thai Fish Cakes Broccoli and Cheddar Quiche (v) Pepperoni or Cajun Chicken Pizza Margarita or Mediterranean Veg Pizza (v) Wedges, Noodles A Selection of Fresh Vegetables Salad Selection Soup of the Day Bread Roll with Olive Oil & Butter Pasta & Sauce of the Day	Chicken Tikka Chick Pea & Lentil Dahl (v) Chicken Burger Spicy Bean Burger (v) Fries, Rice A Selection of Fresh Vegetables Salad Selection Soup of the Day Bread Roll with Olive Oil & Butter Pasta & Sauce of the Day
Pudding	Mousse	Ice Cream	Sponge & Custard	Ice Cream	Caramel Heaven	Ice Cream	Flapjack

TECHNOLOGY

Wi-fi is available in all the houses and parts of the campus and is password protected. We normally only give this password out to Group Leaders / adults due to it being a university campus and limited on firewall security. It is at the Group Leader's discretion whether they give these details to their students.

There is computer access on campus and you will have access to this on a timetabled basis.

There are no public phones on site. The nearest is on Denmark Hill approximately 500 yards from the residence.

SECURITY

There is extensive CCTV coverage on campus and duty security officers 8am - 6pm as well as overnight security officers 6pm - 8am.

Emergency contacts: During their stay each student will be given a wrist band upon arrival, this will have the following emergency telephone number printed on it: 00 44 1244 567695. If you need to contact the centre in the event of an emergency please call this number and follow the options for the relevant centre, this will then put you through to the person on duty.

Certain basic guidelines are common to all centres and students. Students should:

- ✓ **Never walk away alone!**
- ✓ **Never leave the residence without permission in the evening!**
- ✓ **Always make sure they have understood when and where the meeting point is whilst out on excursions!**
- ✓ **Always wear their identification lanyard and their UKLC wristband! ***
*students found not wearing their lanyard or wristband will be fined £1

Remember:

- ✓ That there is a 24-hour emergency telephone number on the wristband (**0044 1244 567695**) and that the number for the emergency services (Ambulance/Police/Fire) in England is **999**, or the single emergency number for the EU including the UK is **112** or you can call **101** to report a crime where you do not need an emergency response
- ✓ That the police are there to help and protect and can be asked for assistance!
- ✓ Never to respond to someone if you feel threatened, simply walk away!
- ✓ To give your money to the UKLC management team to put in the safe and never to carry large amounts of cash around
- ✓ To be careful crossing the road. Remember that in the UK we drive on the left!
- ✓ If you are ill or need a doctor, tell a member of UKLC staff immediately!
- ✓ To keep all windows closed when not in their bedrooms!

Insurance and valuables: Although all houses are accessed via swipe card entry, it is suggested that students try to avoid bringing very expensive items with them. If they are bringing valuables with them, it is essential that they have sufficient insurance to cover any loss of damage as neither the centre nor the company can be held responsible if anything goes missing.

TEACHING

We know how important it is for each individual student to find their own path in language learning. We use a wide range of methods to engage and stimulate our students. This is why we have created a programme based on the students' age, level and need. It is called 'You Can Learn 4', or as we like to call it 'UKL4', and it includes:

UKL4 FUN (Ages 8-11): Highly engaging lessons that offer a wide range of tailored material and activities for our young learners. It makes games into lessons and lessons into games.

UKL4 CONNECTION (Ages 11-14): Highly dynamic lessons that include a variety of topics and media, especially designed to reflect the quick-paced, interactive world our young students are growing up in. Available in levels A1-C1.

UKL4 ACTION (Ages 14-18): Lessons especially designed to engage our older students through more abstract tasks, topics and contemporary issues. Available in levels A1-C1.

UKL4 CONNECTION and UKL4 ACTION programmes consist of three different lessons a day:

1. TBL (Task Based Learning): During these lessons students are encouraged to use the language to complete a task. Language is therefore acquired through the task as it emerges naturally as the result of the students' communicative needs.

2. S&S (Skills & Systems):

These lessons aim at empowering our students' linguistic awareness and capabilities by thoroughly working on all language skills (reading, writing, listening, speaking) and systems (grammar, phonology, lexis, discourse) as well as using materials relevant to exam preparation (KET, PET, FCE, CAE, TOEFL, IELTS, GESE).

3. CLIL: (Content and Language Integrated Learning) :

These lessons merge CLIL and British culture. Students learn about art, literature and science, or about the history and geography of the UK, while activating their linguistic knowledge.

Placement tests

We offer classes at four levels from elementary to upper intermediate. Students are given a placement test on their first day of classes to ensure they are placed at the correct level.

Once the tests have been marked, students won't be told their score unless they specifically ask for it but will be placed into a class level from A1-C1 based on these results.

If students are not happy with their level, they can speak with the Course Director who can decide if it is necessary for the student to change levels.

We always try to split groups into different classes to mix nationalities, but this does depend on their levels and the numbers of students that we have on site.

We will provide all course materials including an exercise book and a pen.

Students are taught in class sizes up to 16 (20 for closed group).

PROGRAMME

All UKLC summer programmes include:

- 15 hours of English lessons
- Full board accommodation in residence or homestay
- Full programme of excursions, activities and evening entertainment
- Evening Conversation Clubs (optional)
- 1 Free leader for 15 students
- Placement Test on arrival and End of Course Certificate



Educate, Inspire, Enrich

King's College, London Sample Programme Summer 2022

Week 1	Tuesday		Wednesday		Thursday		Friday		Saturday		Sunday		Monday	
	AM	PM	AM	PM	AM	PM	AM	PM	AM	PM	AM	PM	AM	PM
	English Test	Tate Modern Gallery	English Lessons	The British Museum & Covent Garden	English Lessons	The National Gallery	English Lessons	Notting Hill & Portobello	English Lessons	The National Science Museum	London - Buckingham Palace, Downing Street, Houses of Parliament, Big Ben & London Eye		Knightsbridge, Hyde Park & Harrods	English Lessons

Week 2	Tuesday		Wednesday		Thursday		Friday		Saturday		Sunday		Monday	
	AM	PM	AM	PM	AM	PM	AM	PM	AM	PM	AM	PM	AM	PM
	National Portrait Gallery & Leicester Square	English Lessons	Natural History Museum	English Lessons	Greenwich with National Maritime Museum	English Lessons	Imperial War Museum	English Lessons	Cambridge Walking Tour with the Fitzwilliam Museum		Camden Town, Market & Regent's Canal		Depart	

Please note: This is a sample programme and may be subject to change. It may also be necessary to operate a zig zag programme of morning / afternoon lessons. An evening programme will be included

Accredited by the
BRITISH COUNCIL
for the teaching
of English in the UK

ALTO Association of
Language Travel
Organisations



Educate, Inspire, Enrich

ENGLISH **UK**
member

**YOUNG
LEARNERS**
ENGLISH **UK**

PROGRAMME

A typical day for students:

08:00 – 09:00 – Breakfast

09:00 – 10:00 – Lesson 1

10:00 – 10:15 – Break

10:15 – 11:15 – Lesson 2

11:15 – 11:30 – Break

11:30 – 12:30 – Lesson 3

12:30 – 13:30 – Lunch

14:00 – 17:30 – Afternoon Activities

18:30 – 19:30 – Dinner

20:00 – 22:00 – Evening Activities

22:00 – Bedtime!

FACILITIES AND USE

Sports facilities on site

- Gymnasium
- Recreational and social areas
- Outdoor gym trail

Evening entertainment

The UK Language Courses staff plan fantastic activities to make sure the students enjoy their evenings. For example: discos, quizzes, fashion shows, blind date, sports tournaments etc. We ask Group Leaders to encourage students to participate as much as possible and to communicate any special ideas or requests from students.

Here are a few brief descriptions of just some of our activities for students to join in on:

Around the World

Consists of a number of different stations based on activities from different countries. One staff member will be placed at each activity station. They will each represent a country and have to create an activity related to that country (for example: New Zealand – The Haka). Students will be divided into groups and given a time for each station. Students will visit each station.

Oscars Night

Involves students watching a number of scenes from selected films. They will have the chance to re-enact a famous selected scene. Creating their own script, which must be in English and costumes (out of various given equipment). Scenes will be shown on a big screen for everyone to watch. Awards will be given by UKLC staff for the best reproduction.

Speed Dating

Enables students from mixed nationalities to socialise and get to know each other whilst improving their spoken English. Students will have a short period of time to have a conversation on their interests, hobbies etc. Once the given time finishes they will move to another student and begin the same process again.

Talent Show

Gives students the opportunity to perform talents such as singing, dancing and acting in front of the whole centre! Sign-up sheets will be available in the centre a few days before the event. There will be judges who will score the performances and give positive feedback to each student who performs on the evening.

We are Covid Secure

Our job is always to keep our students safe. Alongside everything that we usually have in place to do this, we have now added in some new elements that will help us minimise the risk of Covid-19. Please refer to our We are Covid secure document which highlights the measures we have put in place. In addition, you can read our comprehensive policies and procedures in OSH (Operations and Safeguarding Handbook). These can be found on our website (www.uklanguagecourses.com/agent-area). This will continue to be updated regularly in line with government guidance.

The UKLC team look forward to welcoming you to King's College, London in summer 2022!

